



MORELO
FIRST CLASS REISEMOBILE

PRICE LIST 2018

HOME | LOFT | PALACE . PALACE LINER | PALACE ALKOVEN

ENGLISH



HOME 74 H



HOME 78 HS



HOME 78 L



HOME 82 LS



HOME 82 M



TECHNICAL SPECIFICATIONS

MORELO HOME

HOME 74 H

HOME 78 HS



incl. scooter garage



incl. scooter garage

	IVECO Daily 50 C 16	IVECO Daily 50 C 16	
ENGINE	Serial diesel engine (cylinders)	4	4
	Cubic capacity (litres)	2,3	2,3
	Max. Power (KW/HP)	115 / 156	115 / 156
	Max. torque (Nm)	380	380
	Emission class	EURO 6	EURO 6
WEIGHT	Technically permissible max. weight (kg) ¹	5.600 (5.800) ²	5.600(5.800) ²
	Mass in running order (kg) ¹	4.000	4.200
	Payload (kg) ¹	1.600 (1.800) ²	1.400 (1.600) ²
	Tow load (kg)	3.500	3.500
	Permissible max. train weight (kg)	9.100	9.100
DIMENSIONS	Total length (mm)	7.390	7.790
	Total width (mm)	2.350	2.350
	Total height (mm)	3.220 ³	3.220 ³
	Wheel base (mm)	3.750	4.100
	Lounge bench, left (mm)	1.360 x 1.000	1.360 x 1.000
	Couch right (mm)	760 x 630	760 x 630
	Rear bed (mm)	2.050 x 1.500	2.050 x 1.500
	Folding bed (option) (mm)	1.950 x 1.300	1.950 x 1.300
	Garage door (clear height x width in mm)	1.080 x 850	1.080 x 850
	140.500,00 €	142.500,00 €	

Prices in Euro (inkl. 20% VAT)

¹) see back ²) only in combination with the 'Chassis package' ³) in the case of leaf springs on the rear axle + 100 mm

HOME 78 L

HOME 82 LS



incl. scooter garage



incl. scooter garage

IVECO
Daily 50 C 16

IVECO
Daily 50 C 16

	IVECO Daily 50 C 16	IVECO Daily 50 C 16	
ENGINE	Serial diesel engine (cylinders)	4	4
	Cubic capacity (litres)	2,3	2,3
	Max. Power (KW/HP)	115 / 156	115 / 156
	Max. torque (Nm)	380	380
	Emission class	EURO 6	EURO 6
WEIGHT	Technically permissible max. weight (kg) ¹	5.600 (5.800) ²	5.600 (5.800) ²
	Mass in running order (kg) ¹	4.200	4.400
	Payload (kg) ¹	1.400 (1.600) ²	1.200 (1.400) ²
	Tow load (kg)	3.500	3.500
	Permissible max. train weight (kg)	9.100	9.100
DIMENSIONS	Total length (mm)	7.790	8.190
	Total width (mm)	2.350	2.350
	Total height (mm)	3.220 ³	3.220 ³
	Wheel base (mm)	4.100	4.350
	Lounge bench, left (mm)	1.360 x 1.000	1.360 x 1.000
	Couch right (mm)	760 x 630	760 x 630
	Rear bed (mm)	2 x 2.000 x 1.030	2 x 2.000 x 1.030
	Folding bed (option) (mm)	1.950 x 1.300	1.950 x 1.300
	Garage door (clear height x width in mm)	1.080 x 850	1.080 x 850
	142.500,00 €	144.500,00 €	

Prices in Euro (inkl. 20% VAT)

¹) see back ²) only in combination with the 'Chassis package' ³) in the case of leaf springs on the rear axle + 100 mm

HOME 82 M



incl. scooter garage

IVECO
Daily 50 C 16

ENGINE	Serial diesel engine (cylinders)	4
	Cubic capacity (litres)	2,3
	Max. power (KW/HP)	115 / 156
	Max. torque (Nm)	380
	Emission class	EURO 6
WEIGHT	Technically permissible max. weight (kg) ¹	5.600 (5.800) ²
	Mass in running order (kg) ¹	4.400
	Payload (kg) ¹	1.200 (1.400) ²
	Tow load (kg)	3.500
	Permissible max. train weight (kg)	9.100
DIMENSIONS	Total length (mm)	8.190
	Total width (mm)	2.350
	Total height (mm)	3.220 ³
	Wheel base (mm)	4.350
	Lounge bench, left (mm)	1.360 x 1.000
	Couch right (mm)	760 x 630
	Rear bed (mm)	2.000 x 1.500
	Folding bed (option) (mm)	1.950 x 1.300
	Garage door (clear height x width in mm)	1.080 x 850
	144.500,00 €	

Prices in Euro (incl. 20% VAT)

1) see back 2) only in combination with the 'Chassis package' 3) in the case of leaf springs on the rear axle + 100 mm

ENGINE	Turbo diesel engine, with rear wheel drive
	Fuel tank, 90 litres
	Emission class EURO 6
	Mechanical 6-speed transmission
CHASSIS	Rear wheel drive with twin tires on the rear axle
	Tires on rear axle with traction profile
	Disc brakes, on front and rear axles
	Electronic anti-lock braking system (ABS)
	Traction control system (ASR)
	Breakdown set, with warning triangle, first-aid kit, warning light and wheel chock
COCKPIT	Electronical Stability Program (ESP)
	Driver and passenger seats, swiveling, with armrests and integrated belt system
	Roller plissee behind windscreen, electrically activated, privacy screen function
	Panoramic windscreen with laminated glass, tinted
	Side window in driver's cab, with tinted insulating glass
	Independent dashboard
	Cruise control
	Steering wheel, height adjustable
	Outside side mirrors
	Raised driver's cab on special platform
LIGHTS	Fully insulated driver's cab, new GRP module
	Optimized noise insulation of engine compartment
	Sockets, 1 x 12 V, 1 x USB and 2 x 230 V
	Halogen main headlights, with optical lens and additional main beam
	Fog lights
	LED daytime running lights

ACTIVE SAFETY

The intelligent **ActiveAir** spring and damping system, in combination with our newly developed **wide front axle** for the IVECO Daily, raises driving safety and ride comfort to a new level. Experience the numerous advantages of an adaptive damper system and a track width extended by 200 mm:

- Braking distances shortened by up to 15%
 - Side tilt during cornering reduced by up to 50%
- Sensitivity to side winds reduced by up to 8%
- Reduction in fuel consumption thanks to a 9.3% reduction in rolling resistance
- Visual refinement from wide, extended front wheels
- Option to change damper settings between „Comfort“, „Normal“ and „Sport“

www.fahrzeugbau-meier.de



STANDARD EQUIPMENT MORELO HOME

STRUCTURE . FOLDING BED . LIVING ROOM + BEDROOM

STRUCTURE	Side walls and roof are 42 mm thick, 40 mm of which consists of closed-cell RTM hard foam	
	Aluminium side bars on the roof, with rainwater channels to help keeping side walls clean	
	Side walls in ALU-RTM-ALU sandwich design, smooth and high-gloss	
	Roof in GRP-RTM-ALU sandwich design, hail protection and low heat conductivity	
	Underfloor in GRP-RTM-GRP sandwich design, robust, corrosion-free, no timber used	
	Cold-bridge-free wall joint technology, using highly compressed rigid PU profiles	
	Lightning protection, Faraday cage	
	Heatable double floor, approximately 366 mm high, side access via external flaps	
	Entrance door with window, electric with remote control, fly screen and mechanical emergency unlocking	
	Interior entrance step, heated and illuminated	
	Exterior entrance step, 1-step, electrically extendable with safety circuit	
	Rear garage, garage door on right-hand side, with lashing eyelets and 230 V socket	
	Rear wall with fibreglass compound sandwich design, PU foam core	
	Plastic windows in living area, double-glazed and tinted, collapsible outwards or sliding, with pleated blackout blind and flyscreen	
Entirely wood-free exterior structure		
Front and lateral skirting, from highly sturdy fibreglass compound		
External adhesives in black and silver		
Sturdy handle for easy entry, backlit		
FOLDING BED	Skylight, with flyscreen and pleated blackout blind	
	Comfort bed suspension with multi-zone cold foam mattress	
	Lying surface approximately 1.950 x 1.300 mm	
	Dividing curtain	
LIVING ROOM + BEDROOM		
	Floor covering made from easy-care, high-grade vinyl	
	Flat living area floor, from the rear to the dashboard	
	Skylight, with flyscreen and pleated blackout blind in the bedroom	
	Double-glazed, Midi roof window with flyscreen and pleated blackout blind in the living area	
	Lighting canopies with LED spots	
	Rear bed with slatted frame and cold foam mattress	
	Wardrobes with LED lighting	
	Furniture fronts, with metal hinges	
	Microfibre upholstery, including driver and passenger seats	
	Multifunctional couch with ergonomic upholstery, and 2 belted seats in the direction of travel	
	Seating group with ergonomic upholstery, comfortable multi-layer design with diol-based padding and zip fasteners	
	Extensible, sturdy table, with extensive sliding range, laminated	
	Wall-mounted cabinet with LED lighting, including assortment of matching glassware, incl. small pull-out furniture	
Sockets in the living area and in the bedroom		
Wall panelling with colour-coordinated carpet		
Elegant pleated curtains		

OPTIONAL

KITCHEN

- 160 litres AES refrigerator, with separate freezer compartment, automatic and manual energy selection
- Kitchen worktop with laminated surface
- 3-flame stainless steel gas cooker, installed countersunk with automatic ignition and glass cover
- Single-lever mixer tap, chrome
- Chrome rail mounted at the worktop
- Drawers with soft closing and cutlery insert
- Double pull-out waste bin with two removable bins
- Skylight, with flyscreen and pleated blackout blind
- LED-Spots
- Sockets 2 x 230 V

BATHROOM

- Skylight, with flyscreen and pleated blackout blind
- Washstand, with seamlessly integrated sink and domestic drain
- Single-lever mixer tap, chrome
- Soap dispenser, cup holder and towel hook
- Lighted closet
- Shower cabine, with wall rail, height-adjustable showerhead and drying rail
- Divided bathroom, with separate shower and toilet area
- Cassette toilette
- Toilet paper holder and toilet brush
- Spacious wardrobe with LED lighting
- LED-Spots
- Sockets 2 x 230 V

GAS + HEATING + WATER

- Gas bottle compartment, for 2 x 11 kg gas bottles side by side, with gas controller, gas leak protection and gas filter and automatic switchover
- 5,500 W hot water gas central heating, with thermostat control, automatic ventilation valve and backflow shut-off
- Electrical heating element, 230 V, up to 3.000 W
- Integrated hot water boiler, serving all tapping points
- 200 l fresh water tank, in heated double floor, 200 l waste water tank
- Emptying of wastewater tank, via drain tap with large cross section in heated double floor and drain hose with bayonet connection
- Domestic style wastewater pipes
- Central pressure water supply

EXPERT ADVICE

FULLY AUTOMATED JACK SYSTEM



MAKE YOUR STAY IN YOUR MORELO AS COMFORTABLE AND EASY AS POSSIBLE

Our jack systems are precisely matched to your vehicle. The 4 hydraulic jacks level your vehicle in less than 2 minutes. Despite their low empty weight, each jack can lift 2 to 10 tonnes (depending on the model). During the retraction phase, an

exceptionally high pressure is reached to ensure that all of the jacks are fully retracted.

OUR ADVICE

The E&P jack system is fully automated and works at the press of a button, but it can also be operated manually. Automatic tilting also makes it easier to empty the tanks.

www.ep-hydraulics.nl/en



STANDARD EQUIPMENT MORELO HOME

ELECTRONICS . CONTROL PANEL

ELECTRONICS

230 V socket in the garage

Shut-off function for on-board electrical system, in case of undervoltage/overheating

230 V CEE connection, with insulated floor inlet

140 Ah gel battery in intermediate floor including battery monitoring system with overloading and total discharge protection

Automatic charger, electronically controlled, with battery temperature sensor, maximum charge rate of 25 A

CONTROL PANEL

Central control and monitoring panel

Buttons for switching on/off, lighting, water pump and special equipment, including main switch for all consumers

Alarm devices, for 'wastewater tank full', 'step extended', 'fresh water tank empty', reserve gas bottle in use' and diverse others

LCD control panel, for monitoring external and internal temperature, external current supply, parallel battery circuit, battery voltage of vehicle and leisure battery

LCD control panel, for monitoring the wastewater tank, fresh water tank and charging/discharging current, date and time with alarm function

EXPERT ADVICE

DOW: THE BEST

STYROFOAM™ MAKES THE DIFFERENCE

As a manufacturer of high-quality motorhomes, MORELO relies on STYROFOAM™ for heat insulation.

STYROFOAM™ is a blue XPS foam and is used as a core layer material in ceilings, walls and floors.

The closed cell structure of the insulation makes it resistant to moisture.



STYROFOAM™ offers excellent heat insulation, ensures lower fuel consumption thanks to the low weight and provides optimised torsional strength for the vehicle due to high compressive strength. Not only does it increase living comfort on board, it also improves the quality and durability of your motorhome.

®™ Brand of the Dow Chemical Company („Dow“) or an affiliated company

www.styrofoamforcaravans.com



SPECIAL EQUIPMENT MORELO HOME

CHASSIS-PAKET IVECO . CHASSIS . COCKPIT

	Item / Weight ¹	All models	
CHASSIS-PAKET IVECO	011294 / 137	Chassis-Paket IVECO (also available as individual items), saving: 2.290,-€	17.400,00 €
	(011227 / 50)	⌞ Engine version C21 3,0 litres, 151 kW / 205 HP (instead of 2,3 litres/156 HP, only combined with 011203 torque converter transmission	(4.500,00 €)
	(017056 / 0)	⌞ Total weight increase to 5.800 kg	(1.000,00 €)
	(011203D / 20)	⌞ ZF 8-gear torque converter transmission	(4.950,00 €)
	(024801 / 25)	⌞ Airconditioning in driver's cab	(2.190,00 €)
	(018130 / 18)	⌞ Electrical und technical preparation for trailer coupling	(790,00 €)
	(017000D / 15)	⌞ Differential lock for rear axle	(990,00 €)
	(017406 / 05)	⌞ Bus-style windscreen wiper system	(1.290,00 €)
	(011321 / 04)	⌞ Engine heat exchanger	(990,00 €)
CHASSIS	011229 / 45	Engine version 3,0 litres, 132 KW / 180 HP (instead of 156 HP)	4.500,00 €
	011207 / 0	Manual transmission, standard with engine version 3,0 litres, 132 KW / 180 HP	no supplement
	011218 / 98	Original IVECO retarder (serial tank only 70 litres)	7.990,00 €
	018152 / 95	170 litres fuel tank (instead of serial standard) ³	1.990,00 €
	018215 / 25	Air suspension on rear axle only	5.200,00 €
	018159 / 0	Light metal rims „Radial“ on front axle with tires 235/65 R16, with spur widening and wheel trims on rear axle	3.290,00 €
	018179 / 0	Light metal rims „BiColor“ on front axle with tires 235/65 R16, with spur widening and wheel trims on rear axle	3.290,00 €
	018179-01 / 0	Light metal rims „Silver“ on front axle with tires 235/65 R16, with spur widening and wheel trims on rear axle	3.290,00 €
	018170D / 08	Spur widening on front axle, for steel rims	490,00 €
	018182 / 08	Spur widening on rear axle, for steel rims	790,00 €
	018103 / 64	Fixed trailer coupling up to max. 3.500 kg (only in combination with electrical and technical preparation for trailer coupling)	1.400,00 €
	017008 / 0	LED headlights 12 V for low beam, high beam and indicators (only combined with rear axle air suspension)	2.190,00 €
	017020 / 0	LED rear lights, with chrome ring	450,00 €
	018237D / 70	Hydraulic leveling jacks for Daily (only in combination with electrical package)	7.990,00 €
COCKPIT	017305 / 04	MORELO exclusive leather steering wheel, removable to improve seat rotation and deter theft	1.450,00 €
	020209 / 06	Premium Cockpit (leather covering, cup holders, shelf with wooden frame and cooling compartment)	1.150,00 €
	052038 / 04	Heatable cab seats	580,00 €

Prices in Euro (incl. 20% VAT)

¹⁾ Weight in kg ³⁾ by using the original tank sensor a filling level above 150 litres is indicated as „full“!

SPECIAL EQUIPMENT MORELO HOME

CONSTRUCTION . LIFE + STYLE . KITCHEN . BATHROOM . LIVING ROOM + BEDROOM

	Item / Weight ¹		All models
CONSTRUCTION	022022 / 60	Electrically operated awning 6,0m, with LED lighting ² , as from model 78	2.390,00 €
	022020 / 58	Manually operated awning 6,0m, with LED lighting, as from model 78	1.890,00 €
	022010 / 44	Electrically operated awning 5,0m, with LED lighting ² , only model 74	2.190,00 €
	022012 / 42	Manually operated awning 5,0m, with LED lighting, only model 74	1.790,00 €
	022040 / 0	Dimmable awning lighting with remote control	190,00 €
	025099 / 02	Midi roof window, in bedroom (instead of standard mini heki)	690,00 €
	025069 / 07	Panoramic roof window, Heki 3, in bedroom (instead of standard mini heki)	1.290,00 €
	025068 / 03	Panoramic roof window, Heki 3, in living room (instead of standard midi roof window)	890,00 €
	020553 / 10	„Security Class“ entrance door	990,00 €
	037500 / 07	Furniture safe with electronic locking and automatic locking system, volume 8.3 litres	320,00 €
LIFE + STYLE	020400 / 13	Life & Style-Package (also available as individual items), saving 740,- €	2.690,00 €
	(020258 / 04)	└ Carbon look exterior (1.950,00 €)	
	(031945 / 05)	└ Double floor lighting (690,00 €)	
	(020437 / 04)	└ Garage door left-hand side 1.080 x 850 mm (790,00 €)	
KITCHEN	042935 / 137	Kitchen Package (also available as individual items), Saving: 970,-€	2.290,00 €
	(043009 / 10)	190 litres AES refrigerator with separate 33l freezer compartment, automatic and manual energy selection and gas oven with a grill (1.190,00 €)	
	(043089 / 10)	└ Morelosan kitchen work area, with seamlessly integrated wash bowl, railing + luxury cooker (990,00 €)	
	(031511 / 04)	└ Indirect LED ambiance lighting above ceiling canopy (590,00 €)	
	(043261 / 02)	└ Nespresso coffee machine with shelf, capsule rack and 230 V socket (490,00 €)	
	043092 / 15	Kitchen worktop in mineral material, matt-finish, flush sink covers, in various designs	1.890,00 €
	025161 / 05	Extractor fan in the kitchen area instead of standard mini heki	390,00 €
BATHROOM	036002 / 12	Ceramic toilet bowl for cassette toilet, including SOG toilet ventilation	490,00 €
	036122 / 25	Fixed-tank toilet with ceramic toilet bowl, with 200 litres toilet tank (not for model 74)	2.990,00 €
LIVING ROOM + BEDROOM	051960 / 46	Electrically activated folding bed (instead of front overhead lockers)	2.290,00 €
	051965 / 43	Mechanically activated folding bed (instead of front overhead lockers)	1.490,00 €
	042204 / 07	Height-adjustable table column, with extra cushion insert	790,00 €
	050600 / 05	Wall and ceiling covering in smooth finish, with artificial leather	1.500,00 €
	050640 / 05	Separated L-beds with bedside table	2.390,00 €
	036209 / 0	Comfort suspension, for rear bed with 5-zone comfortable cold-foam mattress	490,00 €
	042850 / 0	Supplement for version TREND (furniture corpus in Palisander)	2.500,00 €

Prices in Euro (incl. 20% VAT)

1) Weight in kg 2) only combined with Electrical Package

SPECIAL EQUIPMENT MORELO HOME

MULTIMEDIA . ELECTRONICS . GAS + HEATING + WATER . UPHOLSTERY + DECORATION

	Item / Weight ¹	All models	
MULTIMEDIA	037106 / 08	Double-DIN moniceiver radio, with CD/DVD player, with 2 loudspeakers in the driver's cabin and twin reversing camera	1.990,00 €
	037010 / 08	Navigation system with 8" touch screen panel and DAB / DAB+ tuner, 4 additional loudspeakers, incl. twin reversing camera with shutter and hands-free set for telephone with Bluetooth	3.690,00 €
	037090 / 04	Twin reversing camera with shutter	1.290,00 €
	037315-4 / 52	Satellite TV system, with 24" flat screen underneath cabinet in entrance area (left-hand side), 85 cm dish, fully automatic orientation, digital receiver, multi-user facility via TWIN-LNB and 24" flat screen TV in bedroom (total vehicle height +130 mm)	5.490,00 €
ELECTRONICS	031050 / 02	Alarm system	1.290,00 €
	025043-1 / 30	Roof air conditioning, situated in the corridor between shower and bathroom with infrared remote control, (total vehicle height +130 mm), operation through mains connection only	2.890,00 €
	037196 / 15	Solar panel, with 120 W maximum power	1.490,00 €
	037197 / 30	Solar panels, with 2 x 120 W maximum power	2.190,00 €
	031336 / 60	Electrical Package „Energy 280 Plus“ (instead of serial standard) Gel batteries 2 x 140 Ah, 50 A charger , sine wave inverter up to 1.800 W, 230 V socket in the garage	2.990,00 €
	031337 / 110	Electrical Package „Energy 420“ (instead of serial standard) Gel batteries 2x 210 AH, 80 A charger, sine wave inverter up to 1.800 W, fully automatic top class battery protection, 230 V socket in rear garage	4.190,00 €
	031450 / 05	Sine wave inverter 300 W (with separate socket and on/off switch for continuous use of small appliances, f. e. a respirator)	450,00 €
GAS + HEATING + WATER	034202 / 03	External shower	300,00 €
	034214 / 0	Fresh water tank 300 litres instead of 200 litres	290,00 €
	033022 / 02	Gas alarm, to monitor living area	420,00 €
	034190 / 03	Heat regulator, in bedroom	420,00 €
	044000 / 14	Floor heating, in living area and bathroom	2.500,00 €
	018600 / 15	Diesel auxiliary heating, with convenient continuous heating via heat exchanger (5.200W), including timer	2.950,00 €
	033026 / 03	Outside gas point	290,00 €
UPHOLSTERY + DECORATION	050100 / 0	Microfibre upholstery, in variety of patterns	■
	050505 / 0	BiColour microfibre upholstery, in variety of patterns	300,00 €
	050507 / 20	Fabric-Leather „Trendline“ upholstery combination, in variety of patterns	2.990,00 €
	050500 / 27	Leather upholstery, in variety of patterns	3.590,00 €
	050506 / 27	BiColor leather upholstery, in variety of patterns	3.890,00 €
	051302 / 15	Living area carpet in the colours Coco 830 beige, 865 grey-brown and schoko	890,00 €
	051311 / 0	Living area carpet in special colour	1.040,00 €
	051276 / 05	Decoration package „Trendline“, consisting of 8 cushions and Trendline decorative curtains instead of the serial standard ones, in variety of patterns	650,00 €
	051271 / 0	Venetian blinds in the living room, pleated blinds in the bedroom	590,00 €
	051272 / 0	Venetian blinds in the living room and in the bedroom	1.090,00 €
090000 / 0	Vehicle delivery at the factory, with extensive briefing in German language, handover inspection, diesel tank filling and factory tour	1.590,00 €	

Prices in Euro (incl. 20% VAT)

¹⁾ Weight in kg ■ standard equipment



MORELO
FIRST CLASS REISEMOBILE

BA-MO 153

LOFT 74 H



LOFT 77 HB



LOFT 78 F



LOFT 81 FB



LOFT 79 L



LOFT 82 LB



LOFT 83 LT



LOFT 86 LBT



LOFT 84 M



LOFT 87 MB



TECHNICAL SPECIFICATIONS

MORELO LOFT

LOFT 74 H

LOFT 77 HB



incl. scooter garage



incl. scooter garage

IVECO Daily 60 C 18
(6.000 kg)

IVECO Daily 70 C 18
(7.000 kg)

IVECO Daily 60 C 18
(6.000 kg)

IVECO Daily 70 C 18
(7.000 kg)

	IVECO Daily 60 C 18 (6.000 kg)	IVECO Daily 70 C 18 (7.000 kg)	IVECO Daily 60 C 18 (6.000 kg)	IVECO Daily 70 C 18 (7.000 kg)	
ENGINE	Serial diesel engine (cylinders)	4	4	4	4
	Cubic capacity (litres)	3	3	3	3
	Max. power (KW/HP)	132 / 180	132 / 180	132 / 180	132 / 180
	Max. torque (Nm)	430	430	430	430
	Emission class	EURO 6	EURO 6	EURO 6	EURO 6
WEIGHT	Technically permissible max. weight (kg) ¹	6.000 (7.200) ²	7.200 (7.490) ²	6.000 (7.200) ²	7.200 (7.490) ²
	Mass in running order (kg) ¹	4.700	4.700	4.800	4.800
	Payload (kg) ¹	1.300 (2.500) ²	2.500 (2.790) ²	1.200 (2.400) ²	2.400 (2.690) ²
	Tow load (kg)	3.500	3.500	3.500	3.500
	Permissible max. train weight (kg)	9.500 (10.200) ²	10.700	9.500 (10.200) ²	10.700
DIMENSIONS	Total length (mm)	7.580	7.580	7.880	7.880
	Total width (mm)	2.400	2.400	2.400	2.400
	Total height (mm)	3.350	3.350	3.350	3.350
	Wheel base (mm)	4.100	4.100	4.350	4.350
	Lounge bench, left (mm)	1.440 x 1.000	1.440 x 1.000	1.740 x 1.000	1.740 x 1.000
	Couch right (mm)	880 x 650	880 x 650	880 x 650	880 x 650
	Rear bed (mm)	2.140 x 1.500	2.140 x 1.500	2.140 x 1.500	2.140 x 1.500
	Folding bed (option) (mm)	2.000 x 1.300	2.000 x 1.300	2.000 x 1.300	2.000 x 1.300
	Garage door (left-hand/ right-hand h x w in mm)	650 x 950 / 1.150 x 950	650 x 950 / 1.150 x 950	650 x 950 / 1.150 x 950	650 x 950 / 1.150 x 950
	163.500,00 €	168.500,00 €	164.500,00 €	169.500,00 €	

Prices in Euro (incl. 20 % VAT)

1) see back 2) only in combination with the 'Chassis package'

TECHNICAL SPECIFICATIONS

MORELO LOFT

LOFT 78 F

LOFT 81 FB



incl. scooter garage



incl. scooter garage

IVECO Daily 60 C 18
(6.000 kg)

IVECO Daily 70 C 18
(7.000 kg)

IVECO Daily 60 C 18
(6.000 kg)

IVECO Daily 70 C 18
(7.000 kg)

	IVECO Daily 60 C 18 (6.000 kg)	IVECO Daily 70 C 18 (7.000 kg)	IVECO Daily 60 C 18 (6.000 kg)	IVECO Daily 70 C 18 (7.000 kg)	
ENGINE	Serial diesel engine (cylinders)	4	4	4	4
	Cubic capacity (litres)	3	3	3	3
	Max. power (KW/HP)	132 / 180	132 / 180	132 / 180	132 / 180
	Max. torque (Nm)	430	430	430	430
	Emission class	EURO 6	EURO 6	EURO 6	EURO 6
WEIGHT	Technically permissible max. weight (kg) ¹	6.000 (7.200) ²	7.200 (7.490) ²	6.000 (7.200) ²	7.200 (7.490) ²
	Mass in running order (kg) ¹	4.900	4.900	5.000	5.000
	Payload (kg) ¹	1.100 (2.300) ²	2.300 (2.590) ²	1.000 (2.200) ²	2.200 (2.490) ²
	Tow load (kg)	3.500	3.500	3.500	3.500
	Permissible max. train weight (kg)	9.500 (10.200)	10.700	10.200	10.700
DIMENSIONS	Total length (mm)	7.980	7.980	8.280	8.280
	Total width (mm)	2.400	2.400	2.400	2.400
	Total height (mm)	3.350	3.350	3.350	3.350
	Wheel base (mm)	4.350	4.350	4.350	4.350
	Lounge bench, left (mm)	1.440 x 1.000	1.440 x 1.000	1.740 x 1.000	1.740 x 1.000
	Couch right (mm)	1.130 x 650	1.130 x 650	880 x 650	880 x 650
	Rear bed (mm)	1.950 x 1.580	1.950 x 1.580	1.950 x 1.580	1.950 x 1.580
	Folding bed (option) (mm)	2.000 x 1.300	2.000 x 1.300	2.000 x 1.300	2.000 x 1.300
	Garage door (left-hand/ right-hand h x w in mm)	650 x 950 / 1.150 x 950	650 x 950 / 1.150 x 950	650 x 950 / 1.150 x 950	650 x 950 / 1.150 x 950
	166.500,00 €	171.500,00 €	168.500,00 €	173.500,00 €	

Prices in Euro (incl. 20 % VAT)

¹⁾ see back ²⁾ only in combination with the 'Chassis package'

TECHNICAL SPECIFICATIONS

MORELO LOFT

LOFT 79 L

LOFT 82 LB



incl. scooter garage



incl. scooter garage

IVECO Daily 60 C 18
(6.000 kg)

IVECO Daily 70 C 18
(7.000 kg)

IVECO Daily 60 C 18
(6.000 kg)

IVECO Daily 70 C 18
(7.000 kg)

	IVECO Daily 60 C 18 (6.000 kg)	IVECO Daily 70 C 18 (7.000 kg)	IVECO Daily 60 C 18 (6.000 kg)	IVECO Daily 70 C 18 (7.000 kg)	
ENGINE	Serial diesel engine (cylinders)	4	4	4	4
	Cubic capacity (litres)	3	3	3	3
	Max. power (KW/HP)	132 / 180	132 / 180	132 / 180	132 / 180
	Max. torque (Nm)	430	430	430	430
	Emission class	EURO 6	EURO 6	EURO 6	EURO 6
WEIGHT	Technically permissible max. weight (kg) ¹	6.000 (7.200) ²	7.200 (7.490) ²	6.000 (7.200) ²	7.200 (7.490) ²
	Mass in running order (kg) ¹	5.000	5.000	5.000	5.000
	Payload (kg) ¹	1.000 (2.200) ²	2.200 (2.490) ²	1.000 (2.200) ²	2.200 (2.490) ²
	Tow load (kg)	3.500	3.500	3.500	3.500
	Permissible max. train weight (kg)	9.500 (10.200)	10.700	10.200	10.700
DIMENSIONS	Total length (mm)	8.080	8.080	8.380	8.380
	Total width (mm)	2.400	2.400	2.400	2.400
	Total height (mm)	3.350	3.350	3.350	3.350
	Wheel base (mm)	4.350	4.350	4.750	4.750
	Lounge bench, left (mm)	1.440 x 1.000	1.440 x 1.000	1.740 x 1.000	1.740 x 1.000
	Couch right (mm)	880 x 650	880 x 650	880 x 650	880 x 650
	Rear bed (mm)	2 x 2.000 x 1.060	2 x 2.000 x 1.060	2 x 2.000 x 1.060	2 x 2.000 x 1.060
	Folding bed (option) (mm)	2.000 x 1.300	2.000 x 1.300	2.000 x 1.300	2.000 x 1.300
	Garage door (left-hand/ right-hand h x w in mm)	650 x 950 / 1.150 x 950	650 x 950 / 1.150 x 950	650 x 950 / 1.150 x 950	650 x 950 / 1.150 x 950
Price	165.500,00 €	170.500,00 €	166.500,00 €	171.500,00 €	

Prices in Euro (incl. 20 % VAT)

1) see back 2) only in combination with the 'Chassis package'

TECHNICAL SPECIFICATIONS

MORELO LOFT

LOFT 83 LT

LOFT 86 LBT



incl. scooter garage



incl. scooter garage

IVECO Daily 60 C 18
(6.000 kg)

IVECO Daily 70 C 18
(7.000 kg)

IVECO Daily 60 C 18
(6.000 kg)

IVECO Daily 70 C 18
(7.000 kg)

	IVECO Daily 60 C 18 (6.000 kg)	IVECO Daily 70 C 18 (7.000 kg)	IVECO Daily 60 C 18 (6.000 kg)	IVECO Daily 70 C 18 (7.000 kg)	
ENGINE	Serial diesel engine (cylinders)	4	4	4	4
	Cubic capacity (litres)	3	3	3	3
	Max. power (KW/HP)	132 / 180	132 / 180	132 / 180	132 / 180
	Max. torque (Nm)	430	430	430	430
	Emission class	EURO 6	EURO 6	EURO 6	EURO 6
WEIGHT	Technically permissible max. weight (kg) ¹	6.000 (7.200) ²	7.200 (7.490) ²	6.000 (7.200) ²	7.200 (7.490) ²
	Mass in running order (kg) ¹	5.100	5.100	5.200	5.200
	Payload (kg) ¹	900 (2.100) ²	2.100 (2.390) ²	800 (2.000) ²	2.000 (2.290) ²
	Tow load (kg)	3.500	3.500	3.500	3.500
	Permissible max. train weight (kg)	10.200	10.700	10.200	10.700
DIMENSIONS	Total length (mm)	8.480	8.480	8.780	8.780
	Total width (mm)	2.400	2.400	2.400	2.400
	Total height (mm)	3.350	3.350	3.350	3.350
	Wheel base (mm)	4.750	4.750	4.750	4.750
	Lounge bench, left (mm)	1.440 x 1.000	1.440 x 1.000	1.740 x 1.000	1.740 x 1.000
	Couch right (mm)	880 x 650	880 x 650	880 x 650	2.000 x 1.300
	Rear bed (mm)	2 x 2.000 x 1.060	2 x 2.000 x 1.060	2 x 2.000 x 1.060	2 x 2.000 x 1.060
	Folding bed (option) (mm)	2.000 x 1.300	2.000 x 1.300	2.000 x 1.300	2.000 x 1.300
	Garage door (left-hand/ right-hand h x w in mm)	650 x 950 / 1.150 x 950	650 x 950 / 1.150 x 950	650 x 950 / 1.150 x 950	650 x 950 / 1.150 x 950
	168.500,00 €	173.500,00 €	170.500,00 €	175.500,00 €	

Prices in Euro (incl. 20 % VAT)

¹⁾ see back ²⁾ only in combination with the 'Chassis package'

TECHNICAL SPECIFICATIONS

MORELO LOFT

LOFT 84 M



incl. scooter garage

LOFT 87 MB



incl. scooter garage

IVECO Daily 60 C 18
(6.000 kg)

IVECO Daily 70 C 18
(7.000 kg)

IVECO Daily 60 C 18
(6.000 kg)

IVECO Daily 70 C 18
(7.000 kg)

	IVECO Daily 60 C 18 (6.000 kg)	IVECO Daily 70 C 18 (7.000 kg)	IVECO Daily 60 C 18 (6.000 kg)	IVECO Daily 70 C 18 (7.000 kg)	
ENGINE	Serial diesel engine (cylinders)	4	4	4	4
	Cubic capacity (litres)	3	3	3	3
	Max. power (KW/HP)	132 / 180	132 / 180	132 / 180	132 / 180
	Max. torque (Nm)	430	430	430	430
	Emission class	EURO 6	EURO 6	EURO 6	EURO 6
WEIGHT	Technically permissible max. weight (kg) ¹	6.000 (7.200) ²	7.200 (7.490) ²	6.000 (7.200) ²	7.200 (7.490) ²
	Mass in running order (kg) ¹	5.100	5.100	5.300	5.300
	Payload (kg) ¹	900 (2.100) ²	2.100 (2.390) ²	700 (1.900) ²	1.900 (2.100) ²
	Tow load (kg)	3.500	3.500	3.500	3.500
	Permissible max. train weight (kg)	10.200	10.700	10.200	10.700
DIMENSIONS	Total length (mm)	8.580	8.580	8.880	8.880
	Total width (mm)	2.400	2.400	2.400	2.400
	Total height (mm)	3.350	3.350	3.350	3.350
	Wheel base (mm)	4.750	4.750	4.750	4.750
	Lounge bench, left (mm)	1.440 x 1.000	1.440 x 1.000	1.740 x 1.000	1.740 x 1.000
	Couch right (mm)	880 x 650	880 x 650	880 x 650	880 x 650
	Rear bed (mm)	2.000 x 1.630	2.000 x 1.630	2.000 x 1.630	2.000 x 1.630
	Folding bed (option) (mm)	2.000 x 1.300	2.000 x 1.300	2.000 x 1.300	2.000 x 1.300
	Garage door (left-hand/ right-hand h x w in mm)	650 x 950 / 1.150 x 950	650 x 950 / 1.150 x 950	650 x 950 / 1.150 x 950	650 x 950 / 1.150 x 950
	168.500,00 €	173.500,00 €	171.500,00 €	176.500,00 €	



Prices in Euro (incl. 20 % VAT)

¹⁾ see back ²⁾ only in combination with the 'Chassis package'

STANDARD EQUIPMENT MORELO LOFT

ENGINE . CHASSIS . COCKPIT . LIGHTS

ENGINE	Turbo diesel engine, with rear wheel drive
	Fuel tank, 90 litres
	Emission class EURO 6
	Mechanical 6-speed transmission
CHASSIS	Rear wheel drive with twin tires on the rear axle
	225 / 75 / R 16 tires
	Disc brakes, on front and rear axles
	Electronic anti-lock braking system (ABS)
	Traction control system (ASR)
	Electronical Stability Program (ESP)
COCKPIT	Breakdown set, with warning triangle, first-aid kit, warning light and wheel chock
	Driver and passenger seats, swiveling, with armrests and integrated belt system
	Roller plissee behind windscreen, electrically activated, privacy screen function
	Panoramic windscreen with laminated glass, tinted
	Side window in driver's cab, with tinted insulating glass
	Independent dashboard
	Cruise control
	Steering wheel, height adjustable
	Outside mirrors and windscreen wiper system in bus-style with wide-angle and front mirror
	Raised driver's cab on special platform
	Fully insulated driver's cab, new GRP module
	Optimized noise insulation of engine compartment
LIGHTS	Sockets, 1 x 12 V, 1 x USB and 2 x 230 V
	Halogen main headlights, with optical lens and additional main beam
	Fog lights
	LED daytime running lights

EXPERT ADVICE	<p>DOMETIC TEC-TOWER</p> <hr/> <p>REFRIGERATOR</p> <p>To be top class in the motorhome sector, the interior must also be top class. MORELO motorhomes include our largest refrigerators as standard. Whether it's the 190 litre, two-door RMD with separate freezer compartment or the RMDT (TecTower) with combination oven.</p>	 <p>DOMETIC Mobile living made easy.</p> <p>Just like MORELO, more than just the standard. Dometic. Mobile living made easy.</p> <p>OUR ADVICE Clean the burner tube once a year to ensure that the refrigerator provides the cooling power you have come to expect.</p> <p>www.dometic.com</p>	
---------------	--	---	---

STANDARD EQUIPMENT MORELO LOFT

STRUCTURE . FOLDING BED . LIVING ROOM + BEDROOM

STRUCTURE	Side walls and roof are 42mm thick, 40mm of which consists of closed-cell RTM hard foam	
	Aluminium side bars on the roof, with rainwater channels to help keeping side walls clean	
	Side walls in ALU-RTM-ALU sandwich design, smooth and high-gloss	
	Roof in GRP-RTM-ALU sandwich design, hail protection and low heat conductivity	
	Underfloor in GRP-RTM-GRP sandwich design, robust, corrosion-free, no timber used	
	Cold-bridge-free wall joint technology, using highly compressed rigid PU profiles	
	Lightning protection, Faraday cage	
	Heatable double floor, approximately 366mm high, side access via external flaps	
	Entrance door with window, electric with remote control, fly screen and mechanical emergency unlocking	
	Interior entrance step, heated	
	Exterior entrance step, 2-step, electrically extendable with safety circuit	
	Rear garage, garage door on the right-hand and left-hand side, with lashing eyelets and 230 V socket	
	Rear wall with fibreglass compound sandwich design, PU foam core	
	Plastic windows in living area, double-glazed and tinted, collapsible outwards or sliding, with pleated blackout blind and flyscreen	
FOLD, BED	Entirely wood-free exterior structure	
	Front and lateral skirting, from highly sturdy fibreglass compound	
	External adhesives in black and silver	
	Sturdy handle for easy entry, backlit	
LIVING ROOM + BEDROOM	Skylight, with flyscreen and pleated blackout blind	
	Comfort bed suspension with multi-zone cold foam mattress	OPTIONAL
	Lying surface approximately 2.000 x 1.300 mm	
	Dividing curtain	
	Floor covering made from easy-care, high-grade vinyl	
	Flat living area floor, from the rear to the dashboard	
	Skylight, with flyscreen and pleated blackout blind in the bedroom	
	Double-glazed, Midi roof window with flyscreen and pleated blackout blind in the living area	
	Lighting canopies with LED spots incl. indirect lighting, dimmable	
	Rear bed with slatted frame and cold foam mattress	
	Wardrobes with LED lighting	
Furniture fronts, with metal hinges		
Microfibre upholstery, including driver and passenger seats		
Multifunctional couch with ergonomic upholstery, and 2 belted seats in the direction of travel		
Seating group with ergonomic upholstery, comfortable multi-layer design with diol-based padding and zip fasteners		
Extendible, sturdy table, with extensive sliding range, laminated		
Wall-mounted cabinet with LED lighting, including assortment of matching glassware, space for flat screen TV, incl. small pull-out furniture		
Sockets in the living area and in the bedroom		
Wall panelling with colour-coordinated carpet		
Elegant pleated curtains		

STANDARD EQUIPMENT MORELO LOFT

KITCHEN . BATHROOM . GAS + HEATING + WATER . ELECTRONICS

KITCHEN	160 litres AES refrigerator, with separate freezer compartment, automatic and manual energy selection
	Kitchen worktop with laminated surface
	3-flame stainless steel gas cooker, installed countersunk with automatic ignition and glass cover
	Single-lever mixer tap, chrome
	Chrome rail mounted at the worktop
	Drawers with soft closing and cutlery insert
	Double pull-out waste bin with two removable bins
	Skylight, with flyscreen and pleated blackout blind
	LED-Spots
Sockets 2 x 230 V	
BATHROOM	Skylight, with flyscreen and pleated blackout blind
	Washstand, with seamlessly integrated sink and domestic drain
	Single-lever mixer tap, chrome
	Soap dispenser, cup holder and towel hook
	Lighted closet
	Shower cabine, with wall rail, height-adjustable showerhead and drying rail
	Divided bathroom, with separate shower and toilet area
	Cassette toilet
	Toilet paper holder and toilet brush
	Spacious wardrobe with LED lighting
LED-Spots	
Sockets 2 x 230 V	
GAS + HEATING + WATER	Gas bottle compartment, for 2 x 11 kg gas bottles side by side, with gas controller, gas leak protection, gas filter and automatic switchover
	5.500 W hot water gas central heating, with thermostat control, automatic ventilation valve and backflow shut-off
	Electrical heating element, 230 V, up to 3.000 W
	Towel dryer radiator in bathroom, with thermostat control - only for 83 LT and 86 LBT
	Integrated hot water boiler, serving all tapping points
	300 litres fresh water tank and 200 litres wastewater tank, in heated double floor
	Emptying of wastewater tank, via drain tap with large cross section in heated double floor and drain hose with bayonet connection
	Domestic style wastewater pipes
Central pressure water supply	
ELECTRONICS	230 V socket in the garage
	Shut-off function for on-board electrical system, in case of undervoltage/overheating
	230V CEE connection, with insulated floor inlet
	140 Ah gel battery in intermediate floor including battery monitoring system with overloading and total discharge protection
	Automatic charger, electronically controlled, with battery temperature sensor, maximum charge rate of 25 A

STANDARD EQUIPMENT MORELO LOFT

CONTROL PANEL

CONTROL PANEL

Central control and monitoring panel

Shut-off function for on-board electrical system, in case of undervoltage/overheating

Buttons for switching on/off, lighting, water pump and special equipment, including main switch for all consumers

Alarm devices, for 'wastewater tank full', 'step extended', 'fresh water tank empty', reserve gas bottle in use' and diverse others

LCD control panel, for monitoring external and internal temperature, external current supply, parallel battery circuit, battery voltage of vehicle and leisure battery

LCD control panel, for monitoring the wastewater tank, fresh water tank and charging/discharging current, date and time with alarm function

EXPERT ADVICE

SIZE IN DETAIL

All TV sets in your MORELO are manufactured by alphonics, located in Nuremberg, Germany.

This means consistently high quality that meets your expectations for a reliable mobile television.

The devices feature energy-saving alphonics wide-angle displays, integrated Triple Tuner (DVB-S2, DVB-T2 (H.265), DVB-C with CI+ for receiving Pay TV),

alphonics

DVD player, equipped for the Mobile Home Automation system.

OUR ADVICE

Simply put your favourite films on a USB stick and bring them on holiday with you. You'll be entertained throughout the trip, all thanks to alphonics.



www.alphonics.de



SPECIAL EQUIPMENT MORELO LOFT

CHASSIS PACKAGE I . PACKAGE II . CHASSIS

Item / Weight ¹		All models
011314 / 77	Chassis Package I for 60 C 18, Saving: 2.090,-€	14.500,00 €
011236 / 15	↳ Engine version C21, 151KW / 205HP, (only combined with 011203 torque converter transmission)	(2.500,00 €)
017033 / 0	↳ Total weight increase to 7.200 kg	(2.500,00 €)
011203D / 10	↳ ZF 8-gear torque converter transmission	(4.950,00 €)
024800 / 25	↳ Airconditioned driver's cab, with cooling compartment	(2.190,00 €)
018130 / 07	↳ Electrical und technical preparation for trailer coupling	(790,00 €)
011320 / 04	↳ Engine heat exchanger	(990,00 €)
018140 / 0	↳ Heated windscreen	(1.290,00 €)
050020 / 01	↳ Dashboard with double stitching and soft covering	(390,00 €)
017000D / 15	↳ Differential lock for rear axle	(990,00 €)
011316 / 77	Chassis Package II for 70 C 18, Saving: 1.090,-€ - Package identical to 60 C 18 but with max. total weight at 7.490 kg	13.000,00 €
011218 / 98	Original retarder from Iveco (70 litres serial fuel tank)	7.990,00 €
018152 / 95	170 litres fuel tank (instead of serial standard) ³	1.990,00 €
018214D / 25	Air suspension on rear axle only	5.600,00 €
018212D / 64	Air suspension, front and rear axle, automatic leveling and various special functions (only combined with light metal rims)	9.890,00 €
018160 / 0	Light metal rims „Radial“ on front axle, with spur widening and wheel trims on rear axle (spare wheel with steel rim), steel valves	2.790,00 €
018162 / 0	Light metal rims "Radial" front and rear axle, on front axle with spur widening (spare wheel with steel rim), steel valves	3.990,00 €
018178 / 0	Light metal rims "BiColor" on front axle, with spur widening and wheel trims on rear axle (spare wheel with steel rim), steel valves	2.790,00 €
018161D / 0	Light metal rims "BiColor" front and rear axle, on front axle with spur widening (spare wheel with steel rim), steel valves	3.990,00 €
018178-01 / 0	Light metal rims "Silver" on front axle, with spur widening and wheel trims on rear axle (spare wheel with steel rim), steel valves	2.790,00 €
018161-01D / 0	Light metal rims "Silver" front and rear axle, on front axle with spur widening (spare wheel with steel rim), steel valves	3.990,00 €
018170D / 08	Spur widening on front axle, for steel rims	490,00 €
018181 / 08	Spur widening on rear axle, for steel rims	790,00 €
018175 / 15	Daily „wide axle“ front axle (spur widening +200 mm)	7.290,00 €
018103 / 64	Fixed trailer coupling up to max. 3.500 kg (only in combination with electrical and technical preparation for trailer coupling)	1.400,00 €
018120D / 07	Surcharge for removable trailer coupling head (only in combination with trailer coupling)	500,00 €
017008 / 0	LED headlights 12 V (only combined with rear axle air suspension)	2.190,00 €
017020 / 0	LED rear lights, with chrome ring	450,00 €
018233D / 70	Hydraulic leveling jacks for Daily (only in combination with electrical package) ²	7.990,00 €
018225 / 05	"Active-Air" Chassis (only in combination with air suspension on front and rear axle)	4.490,00 €

Prices in Euro (incl. 20% VAT)

¹) Weight in kg ²) only combined with Electrical Package ³) by using the original tank sensor a filling level above 150 litres is indicated as „full“!

SPECIAL EQUIPMENT MORELO LOFT

COCKPIT . CONSTRUCTION . KITCHEN . PACKAGE BASIC

	Item / Weight ¹		All models
COCKPIT	017305 / 04	MORELO exclusive leather steering wheel, removable to improve seat rotation and deter theft	1.450,00 €
	020206 / 06	Premium-Cockpit (leather covering, cup holders, shelf with wooden frame, cup holder and cooling compartment)	850,00 €
	052038 / 04	Heating for standard cab seats	580,00 €
	052130 / 55	Luxury driver's cab seats, air suspended with lumbar support, armrests and heating	3.990,00 €
	025025 / 15	Flush, double-glazed driver's cab side windows, mechanically activated	1.290,00 €
	025026 / 20	Flush, double-glazed driver's cab side windows, electrically activated	2.350,00 €
	021039 / 06	Double horn air fanfare (only in combination with luxury driver's cab seats)	890,00 €
CONSTRUCTION	022022 / 60	Electrically operated awning 6,0m, with LED lighting ²	2.390,00 €
	022020 / 58	Manually operated awning 6,0m, with LED lighting	1.890,00 €
	022010 / 44	Electrically operated awning 5,0m, with LED lighting ² , only model 74	2.190,00 €
	022012 / 42	Manually operated awning 5,0m, with LED lighting, only model 74	1.790,00 €
	022040 / 0	Dimmable awning lighting with remote control	190,00 €
	025100 / 04	Midi roof window, in bedroom (instead of standard mini heki)	690,00 €
	025150 / 07	Panoramic roof window, Heki 3, in bedroom (instead of standard mini heki)	1.290,00 €
	025102 / 04	Panoramic roof window, Heki 3, in living room (instead of standard midi roof window)	890,00 €
	020551 / 10	"Security Class" entrance door, electric and keyless	990,00 €
	037500 / 07	Furniture safe with electronic locking and automatic locking system	320,00 €
	020260 / 02	Carbon look exterior	1.590,00 €
	031945 / 05	Double floor lighting	690,00 €
	020438 / 04	Big garage door left-hand side, 1.150 x 950 mm (not for model 78 F)	790,00 €
	KITCHEN	043083 / 15	Kitchen worktop in mineral material, matt-finish, flush sink covers, in various designs
043052 / 22		Microwave oven in stainless steel, with grill function (26 litres oven) underneath of worktop (230 V via mains connection)	1.290,00 €
043252 / 05		Additional pull-out drawers in kitchen block instead of hinged door	390,00 €
043262 / 05		Nespresso coffee machine, with shelf, capsule rack and 230 V socket ²	490,00 €
025161 / 05		Extractor fan in the kitchen area instead of standard mini heki	390,00 €
PACKAGE BASIC	042940 / 24	Kitchen Package Basic (also available as individual items), Saving: 970,-€	2.290,00 €
	(043010 / 10)	L 190 litres AES refrigerator with separate 33 litres freezer compartment, automatic and manual energy selection and gas oven with a grill	(1.190,00 €)
	(031510 / 04)	L Indirect LED ambiance lighting above ceiling canopy and underneath dashboard	(590,00 €)
	(043120-1 / 10)	L Morelosan kitchen work area, with seamlessly integrated wash bowl, railing + luxury cooker	(990,00 €)
	(043262 / 05)	L Nespresso coffee machine with shelf, capsule rack and 230 V socket ²	(490,00 €)

Prices in Euro (incl. 20% VAT)

1) Weight in kg 2) only combined with Electrical Package

SPECIAL EQUIPMENT MORELO LOFT

PACKAGE PLUS . LIVING ROOM + BEDROOM . BATHROOM . ELECTRONICS

	Item / Weight ¹⁾	All models	
PACKAGE +	042942 / 29	Kitchen Package Plus, Saving: 670,- €	3.490,00 €
		^L Identical to Kitchen Package Basic but with mineral material worktop, matt-finishing and flush sink covers, in various designs	
LIVING ROOM + BEDROOM	051961 / 46	Electrically activated folding bed (instead of front overhead lockers)	2.290,00 €
	051966 / 43	Mechanically activated folding bed (instead of front overhead lockers)	1.490,00 €
	042204 / 07	Height-adjustable table column, with extra cushion insert (only for standard lounge seating group)	790,00 €
	050600 / 05	Wall and ceiling covering in smooth finish, with artificial leather	1.500,00 €
	050643 / 05	Separated L-beds with bedside table	2.390,00 €
	036201 / 0	Comfort suspension, for rear bed with 5-zone comfortable cold-foam mattress	490,00 €
	035260 / 97	Bar seating group (passenger's side) for models 78 F, 77 HB, 81 FB, 82 LB and 87 MB, with adjustable single seat and multifunctional bench (incl. homologation for 5 persons) Elimination narrow closet next to refrigerator	2.290,00 €
	036600 / 0	Change of pattern for furniture fronts, price per unit, position and number can be freely chosen	90,00 €
	044102 / 05	Central vacuum cleaner, with convenient emptying	990,00 €
	042850 / 0	Supplement for version TREND (furniture corpus in Palisander)	2.500,00 €
	BATHROOM	036002 / 12	Ceramic toilet bowl for cassette toilet, including SOG toilet ventilation
036126 / 25		Fixed-tank toilet with ceramic toilet bowl, with 200 litres toilet tank	2.990,00 €
035990 / 05		Greywater pump for transfer of wastewater into the toilet tank	890,00 €
ELECTRONICS	031050 / 02	Alarm system	1.290,00 €
	025043-1 / 30	Roof air conditioning, situated in the corridor between shower and bathroom with infrared remote control, (total vehicle height +130 mm)	2.890,00 €
	037196 / 15	Solar panel, with 120 W maximum power	1.490,00 €
	037197 / 30	Solar panels, with 2 x 120 W maximum power	2.190,00 €
	031337 / 110	Electrical Package „Energy 420“ (instead of serial standard) Gel batteries 2x 210 AH, 80 A charger, sine wave inverter up to 1.800 W, fully automatic top class battery protection, 230 V socket in rear garage	4.190,00 €
	031340 / 110	Electrical Package „Masterpower“ (instead of serial standard) Gel batteries 2x 210 AH, combined charger/inverter 100 A/2.200 W, with power sharing, fully automatic top class battery protection, 230 V socket in rear garage	4.990,00 €
	031341 / 35	Electrical Package „Masterpower Lithium“ (instead of serial standard) Lithium battery 1x 360 AH, combined Mastervolt charger/inverter 150 A/3.000 W, with power sharing, fully automatic top class battery protection, 230 V socket in rear garage	11.990,00 €
031450 / 05	Sine wave inverter 300 W (with separate socket and on/off switch for continuous use of small appliances, f.e. a respirator) (absolutely recommendable)	450,00 €	

Prices in Euro (incl. 20% VAT)

¹⁾ Weight in kg

SPECIAL EQUIPMENT MORELO LOFT

MULTIMEDIA . GAS + HEATING + WATER . UPHOLSTERY

Item / Weight ¹⁾		All models	
MULTIMEDIA	037149 / 08	Double-DIN moniceiver radio, with CD/DVD player, with 2 loudspeakers in the driver's cabin and twin reversing camera	1.990,00 €
	037011 / 08	Navigation system with 8" touch screen panel and DAB/DAB+ tuner, 4 additional loudspeakers (total 4 pces.), incl. twin reversing camera with shutter and hands-free set for telephone with Bluetooth	3.690,00 €
	037102 / 04	Twin reversing camera with shutter	1.290,00 €
	037416 / 46	Satellite TV system, with 24" flat screen underneath cabinet in entrance area (left-hand side), 85 cm dish, fully automatic orientation, multi-user facility via TWIN-LNB and 24" flat screen TV in bedroom (total vehicle height + 130 mm)	5.490,00 €
	037414 / 54	Satellite TV system, with 32" flat screen in wall-mounted cabinet (right-hand side), electrically lowerable, 85 cm dish, fully automatic orientation, multi-user facility via TWIN-LNB, 24" flat screen TV in bedroom, ceiling high double drawer cabinet (total vehicle height + 130mm)	6.290,00 €
	037418 / 54	Satellite TV system, with 32" flat screen mounted overhead above dashboard, electrically lowerable, 85 cm dish, fully automatic orientation, multi-user facility via TWIN-LNB, 24" flat screen TV in bedroom, big glass cabinet in the entrance area to the left with small single drawer cabinet - not in combination with fold-down bed (total vehicle height + 130 mm)	6.290,00 €
GAS + HEATING + WATER	034202 / 01	External shower on the driver's side in the rear	300,00 €
	033022 / 02	Gas alarm, to monitor living area	420,00 €
	034190 / 03	Heat regulator, in bedroom	420,00 €
	044000 / 14	Floor heating, in living area and bathroom	2.500,00 €
	018600 / 15	Diesel auxiliary heating, with convenient continuous heating via heat exchanger (5.200 W), including timer	2.950,00 €
	033026 / 03	Outside gas point on side wall at passenger's side	290,00 €
	033007 / 88	120 litres gas tank, with remote filling in the side wall and level indicator in control panel display	2.590,00 €
	023110 / 40	2.600 W gas generator, fixed installation (only in combination with gas tank)	5.290,00 €
UPHOLSTERY	050100 / 0	Microfibre upholstery, in variety of patterns	■
	050505 / 0	BiColour microfibre upholstery, in variety of patterns	300,00 €
	050507 / 20	Fabric-Leather "Trendline" upholstery combination, in variety of patterns	2.990,00 €
	050500 / 27	Leather upholstery, in variety of patterns	3.590,00 €
	050506 / 27	BiColor leather upholstery, in variety of patterns	3.890,00 €

Prices in Euro (incl. 20% VAT)

1) Weight in kg ■ standard equipment

SPECIAL EQUIPMENT MORELO LOFT

DECORATION

Item / Weight ¹		All models
051312 / 15	Living area carpet in the colours Coco 830 beige, 865 grey-brown and schoko	890,00 €
051311 / 0	Living area carpet in special colour	1.040,00 €
051276 / 05	Decoration package "Trendline", consisting of 8 cushions and Trendline decorative curtains instead of the serial standard ones, in variety of patterns	650,00 €
051271 / -	Venetian blinds in the living room, pleated blinds in the bedroom	590,00 €
051272 / -	Venetian blinds in the living room and in the bedroom	1.090,00 €
090000 / -	Vehicle delivery at the factory, with extensive briefing in German language, handover inspection, diesel tank filling and factory tour	1.590,00 €







MODEL OVERVIEW

MORELO PALACE

PALACE 80 H



PALACE 83 HB



PALACE 81 F



PALACE 84 FB



PALACE 85 L



PALACE 88 LB



PALACE 90 LS



PALACE 90 LBX



PALACE 90 M



PALACE 93 MB



PALACE 90 G



PALACE 90 LO

(incl. Slide-Out)



PALACE 95 MO

(incl. Slide-Out)



MODEL OVERVIEW

MORELO PALACE LINER

PALACE LINER 88 LB



PALACE LINER 90 LS



PALACE LINER 90 LBX



PALACE LINER 90 M



PALACE LINER 93 MB



PALACE LINER 95 GB



PALACE LINER 103 GSB



PALACE LINER 108 GSB



PALACE LINER 90 LO

(incl. Slide-Out)



PALACE LINER 95 MO

(incl. Slide-Out)



PALACE LINER 97 GO

(incl. Slide-Out)



PALACE LINER 107 GSO

(incl. Slide-Out)



PALACE

PALACE LINER

TECHNICAL SPECIFICATIONS

MORELO PALACE

PALACE 80 H

PALACE 83 HB



incl. scooter garage



incl. scooter garage

IVECO Daily 70 C 18
(7.490 kg)

IVECO Eurocargo
75 E 21

IVECO Daily 70 C 18
(7.490 kg)

IVECO Eurocargo
75 E 21

	PALACE 80 H		PALACE 83 HB	
	IVECO Daily 70 C 18 (7.490 kg)	IVECO Eurocargo 75 E 21	IVECO Daily 70 C 18 (7.490 kg)	IVECO Eurocargo 75 E 21
ENGINE	Serial diesel engine (cylinders)	4	4	4
	Cubic capacity (litres)	3	4,5	3
	Max. power (KW/HP)	132 / 180	152 / 207	132 / 180
	Max. torque (Nm)	430	750	430
Emission class	EURO 6	EURO 6	EURO 6	EURO 6
WEIGHT	Technically permissible max. weight (kg) ¹⁾	7.490	7.490	7.490
	Mass in running order (kg) ¹⁾	5.300	5.700	5.400
	Payload (kg) ¹⁾	2.190	1.790	2.090
	Tow load (kg)	3.500	3.500	3.500
	Permissible max. train weight (kg)	10.700	10.990	10.700
DIMENSIONS	Total length (mm)	8.230	8.240	8.490
	Total width/XL width (mm)	2.400 / 2.500	2.400 / 2.500	2.400 / 2.500
	Total height (mm)	3.440	3.450	3.440
	Wheel base (mm)	4.350	4.185	4.750
	Lounge bench, left (mm)	1.440 x 1.000	1.440 x 1.000	1.740 x 1.000
	Couch, right (mm)	1.250 x 650	1.250 x 650	1.250 x 650
	Rear bed (mm)	2.140 x 1.500	2.140 x 1.500	2.140 x 1.500
	Folding bed (option) (mm)	2.000 x 1.300	2.000 x 1.300	2.000 x 1.300
	Rear garage door (clear height x width in mm)	1.230 x 1.120	1.230 x 1.120	1.230 x 1.120
	199.900,00 €	219.400,00 €	203.900,00 €	223.400,00 €
	Surcharge for 2.50 m XL width 5.000,00 €	5.000,00 €	5.000,00 €	5.000,00 €

Prices in Euro (incl. 20 % VAT)

¹⁾ see back

PALACE 81 F

PALACE 84 FB



incl. scooter garage



incl. scooter garage

IVECO Daily 70 C 18
(7.490 kg)

IVECO Eurocargo
75 E 21

IVECO Daily 70 C 18
(7.490 kg)

IVECO Eurocargo
75 E 21

	PALACE 81 F		PALACE 84 FB		
	IVECO Daily 70 C 18 (7.490 kg)	IVECO Eurocargo 75 E 21	IVECO Daily 70 C 18 (7.490 kg)	IVECO Eurocargo 75 E 21	
ENGINE	Serial diesel engine (cylinders)	4	4	4	
	Cubic capacity (litres)	3	4,5	3	
	Max. power (KW/HP)	132 / 180	152 / 207	132 / 180	152 / 207
	Max. torque (Nm)	430	750	430	750
	Emission class	EURO 6	EURO 6	EURO 6	EURO 6
WEIGHT	Technically permissible max. weight (kg) ¹	7.490	7.490	7.490	7.490
	Mass in running order (kg) ¹	5.350	5.800	5.400	6.050
	Payload (kg) ¹	2.140	1.690	2.090	1.440
	Tow load (kg)	3.500	3.500	3.500	3.500
	Permissible max. train weight (kg)	10.700	10.990	10.700	10.990
DIMENSIONS	Total length (mm)	8.330	8.340	8.630	8.600
	Total width/XL width (mm)	2.400 / 2.500	2.400 / 2.500	2.400 / 2.500	2.400 / 2.500
	Total height (mm)	3.440	3.450	3.440	3.450
	Wheel base (mm)	4.750	4.185	4.750	4.455
	Lounge bench, left (mm)	1.440 x 1.000	1.440 x 1.000	1.740 x 1.000	1.740 x 1.000
	Couch, right (mm)	1.250 x 650	1.250 x 650	1.250 x 650	1.250 x 650
	Rear bed (mm)	1.910 x 1.580	1.910 x 1.580	1.910 x 1.580	1.910 x 1.580
	Folding bed (option) (mm)	2.000 x 1.300	2.000 x 1.300	2.000 x 1.300	2.000 x 1.300
	Rear garage door (clear height x width in mm)	1.230 x 1.120 ²	1.230 x 1.120 ²	1.230 x 1.120 ²	1.230 x 1.120 ²
	200.900,00 € Surcharge for 2.50 m XL width 5.000,00 €	220.400,00 € 5.000,00 €	204.900,00 € 5.000,00 €	224.400,00 € 5.000,00 €	

Prices in Euro (incl. 20 % VAT)

¹⁾ see back ²⁾ driver's side: 650 x 950 mm

TECHNICAL SPECIFICATIONS

MORELO PALACE

PALACE 85 L

PALACE 88 LB



incl. scooter garage



incl. scooter garage

IVECO Daily 70 C 18
(7.490 kg)

IVECO Eurocargo
75 E 21

IVECO Daily 70 C 18
(7.490 kg)

IVECO Eurocargo
75 E 21

	PALACE 85 L		PALACE 88 LB	
	IVECO Daily 70 C 18 (7.490 kg)	IVECO Eurocargo 75 E 21	IVECO Daily 70 C 18 (7.490 kg)	IVECO Eurocargo 75 E 21
ENGINE	Serial diesel engine (cylinders)	4	4	4
	Cubic capacity (litres)	3	4,5	3
	Max. power (KW/HP)	132 / 180	152 / 207	132 / 180
	Max. torque (Nm)	430	750	430
	Emission class	EURO 6	EURO 6	EURO 6
WEIGHT	Technically permissible max. weight (kg) ¹⁾	7.490	7.490	7.490
	Mass in running order (kg) ¹⁾	5.450	6.100	5.600
	Payload (kg) ¹⁾	2.040	1.390	1.890
	Tow load (kg)	3.500	3.500	3.500
	Permissible max. train weight (kg)	10.700	10.990	10.700
DIMENSIONS	Total length (mm)	8.730	8.740	8.990
	Total width/XL width (mm)	2.400 / 2.500	2.400 / 2.500	2.400 / 2.500
	Total height (mm)	3.440	3.450	3.440
	Wheel base (mm)	4.750	4.455	5.100
	Lounge bench, left (mm)	1.440 x 1.000	1.440 x 1.000	1.740 x 1.000
	Couch, right (mm)	1.250 x 650	1.250 x 650	1.250 x 650
	Rear bed (mm)	2 x 2.000 x 1.060	2 x 2.000 x 1.060	2 x 2.000 x 1.060
	Folding bed (option) (mm)	2.000 x 1.300	2.000 x 1.300	2.000 x 1.300
	Rear garage door (clear height x width in mm)	1.230 x 1.120	1.230 x 1.120	1.230 x 1.120
	205.900,00 €	225.400,00 €	209.900,00 €	229.400,00 €
	Surcharge for 2.50 m XL width 5.000,00 €	5.000,00 €	5.000,00 €	5.000,00 €

Prices in Euro (incl. 20 % VAT)

¹⁾ see back

PALACE 90 LS

PALACE 90 LBX



incl. scooter garage



incl. scooter garage

IVECO Daily 70 C 18
(7.490 kg)

**IVECO Eurocargo
75 E 21**

IVECO Daily 70 C 18
(7.490 kg)

**IVECO Eurocargo
75 E 21**

ENGINE	Serial diesel engine (cylinders)	4	4	4	4
	Cubic capacity (litres)	3	4,5	3	4,5
	Max. power (KW/HP)	132 / 180	152 / 207	132 / 180	152 / 207
	Max. torque (Nm)	430	750	430	750
Emission class	EURO 6	EURO 6	EURO 6	EURO 6	
WEIGHT	Technically permissible max. weight (kg) ¹⁾	7.490	7.490	7.490	7.490
	Mass in running order (kg) ¹⁾	5.600	6.400	5.600	6.400
	Payload (kg) ¹⁾	1.890	1.090	1.890	1.090
	Tow load (kg)	3.500	3.500	3.500	3.500
	Permissible max. train weight (kg)	10.700	10.990	10.700	10.990
DIMENSIONS	Total length (mm)	9.230	9.240	9.230	9.240
	Total width/XL width (mm)	2.400 / 2.500	2.400 / 2.500	2.400 / 2.500	2.400 / 2.500
	Total height (mm)	3.440	3.450	3.440	3.450
	Wheel base (mm)	5.100	4.815	5.100	4.815
	Lounge bench, left (mm)	1.440 x 1.000	1.440 x 1.000	1.740 x 1.000	1.740 x 1.000
	Couch, right (mm)	1.250 x 650	1.250 x 650	1.250 x 650	1.250 x 650
	Rear bed (mm)	2 x 2.000 x 1.060	2 x 2.000 x 1.060	2 x 2.000 x 1.060	2 x 2.000 x 1.060
	Folding bed (option) (mm)	2.000 x 1.300	2.000 x 1.300	2.000 x 1.300	2.000 x 1.300
	Rear garage door (clear height x width in mm)	1.230 x 1.120	1.230 x 1.120	1.230 x 1.120	1.230 x 1.120
€		210.900,00 €	230.400,00 €	210.900,00 €	230.400,00 €
	Surcharge for 2.50 m XL width	5.000,00 €	5.000,00 €	5.000,00 €	5.000,00 €

Prices in Euro (incl. 20 % VAT)

¹⁾ see back

TECHNICAL SPECIFICATIONS

MORELO PALACE

PALACE 90 M

PALACE 93 MB



incl. scooter garage



incl. scooter garage

IVECO Daily 70 C 18
(7.490 kg)

IVECO Eurocargo
75 E 21

IVECO Daily 70 C 18
(7.490 kg)

ENGINE	Serial diesel engine (cylinders)	4	4	4
	Cubic capacity (litres)	3	4,5	3
	Max. power (KW/HP)	132 / 180	152 / 207	132 / 180
	Max. torque (Nm)	430	750	430
Emission class	EURO 6	EURO 6	EURO 6	
WEIGHT	Technically permissible max. weight (kg) ¹⁾	7.490	7.490	7.490
	Mass in running order (kg) ¹⁾	5.600	6.400	5.700
	Payload (kg) ¹⁾	1.890	1.090	1.790
	Tow load (kg)	3.500	3.500	3.500
	Permissible max. train weight (kg)	10.700	10.990	10.700
DIMENSIONS	Total length (mm)	9.230	9.240	9.490
	Total width/XL width (mm)	2.400 / 2.500	2.400 / 2.500	2.400 / 2.500
	Total height (mm)	3.440	3.450	3.440
	Wheel base (mm)	5.100	4.815	5.100
	Lounge bench, left (mm)	1.440 x 1.000	1.440 x 1.000	1.740 x 1.000
	Couch, right (mm)	1.250 x 650	1.250 x 650	1.250 x 650
	Rear bed (mm)	2.000 x 1.630	2.000 x 1.630	2.000 x 1.630
	Folding bed (option) (mm)	2.000 x 1.300	2.000 x 1.300	2.000 x 1.300
	Rear garage doors (clear height x width in mm)	1.230 x 1.120	1.230 x 1.120	1.230 x 1.120
€		210.900,00 €	230.400,00 €	212.900,00 €
	Surcharge for 2.50 m XL width	5.000,00 €	5.000,00 €	5.000,00 €

Prices in Euro (incl. 20 % VAT)

¹⁾ see back

PALACE 90 G



IVECO Daily 70 C 18
(7.490 kg)

ENGINE	Serial diesel engine (cylinders)	4
	Cubic capacity (litres)	3
	Max. power (KW/HP)	132 / 180
	Max. torque (Nm)	430
	Emission class	EURO 6
WEIGHT	Technically permissible max. weight (kg) ¹	7.490
	Mass in running order (kg) ¹	5.800
	Payload (kg) ¹	1.690
	Tow load (kg)	3.500
	Permissible max. train weight (kg)	10.700
DIMENSIONS	Total length (mm)	9.440
	Total width/XL width (mm)	2.400 / 2.500
	Total height (mm)	3.440
	Wheel base (mm)	5.100
	Lounge bench, left (mm)	1.440 x 1.000
	Couch, right (mm)	1.250 x 650
	Rear bed (mm)	2.000 x 1.630
	Folding bed (option) (mm)	2.000 x 1.300
	Rear garage door (clear height x width in mm)	1.600 x 1.800
€		230.900,00 €
	Surcharge for 2.50 m XL width	5.000,00 €

PALACE

TECHNICAL SPECIFICATIONS

MORELO PALACE

PALACE 90 LO

(incl. Slide-Out)



incl. scooter garage

PALACE 95 MO

(incl. Slide-Out)



incl. scooter garage

IVECO Daily 70 C 18
(7.490 kg)

IVECO Daily 70 C 18
(7.490 kg)

ENGINE	Serial diesel engine (cylinders)	4	4
	Cubic capacity (litres)	3	3
	Max. power (KW/HP)	132 / 180	132 / 180
	Max. torque (Nm)	430	430
Emission class	EURO 6	EURO 6	
WEIGHT	Technically permissible max. weight (kg) ¹⁾	7.490	7.490
	Mass in running order (kg) ¹⁾	5.800	6.100
	Payload (kg) ¹⁾	1.690	1.390
	Tow load (kg)	3.500	3.500
	Permissible max. train weight (kg)	10.700	10.700
DIMENSIONS	Total length (mm)	9.230	9.730
	Total width/XL width (mm)	2.400 / 2.500	2.400 / 2.500
	Total height (mm)	3.440	3.440
	Wheel base (mm)	5.100	5.250
	Lounge bench, left (mm)	1.540 x 1.000	1.540 x 1.000
	Couch, right (mm)	1.250 x 650	1.250 x 650
	Rear bed (mm)	2 x 2.000 x 1.060	2.000 x 1.630
	Folding bed (option) (mm)	2.000 x 1.300	2.000 x 1.300
	Rear garage door (clear height x width in mm)	1.230 x 1.120	1.230 x 1.120
€		237.900,00 €	241.900,00 €
	Surcharge for 2.50 m XL width	5.000,00 €	5.000,00 €

Prices in Euro (incl. 20 % VAT)

¹⁾ see back

TECHNICAL SPECIFICATIONS

MORELO PALACE LINER

PALACE LINER 88 LB

PALACE LINER 90 LS



incl. scooter garage



incl. scooter garage

	IVECO Eurocargo 100 E 25	Mercedes Benz Atego 923	Mercedes Benz Atego 924	IVECO Eurocargo 100 E 25	Mercedes Benz Atego 923	Mercedes Benz Atego 924	
ENGINE	Serial diesel engine (cylinders)	6	4	6	6	4	6
	Cubic capacity (litres)	6,7	5,1	7,7	6,7	5,1	7,7
	Max. power (KW/HP)	185 / 251	170 / 231	175 / 238	185 / 251	170 / 231	175 / 238
	Max. torque (Nm)	850	900	1.000	850	900	1.000
	Emission class	EURO 6	EURO 6	EURO 6	EURO 6	EURO 6	EURO 6
WEIGHT	Technically permissible max. weight (kg) ¹	10.000	9.500	10.500	10.000	9.500	10.500
	Mass in running order (kg) ¹	7.140	7.460	7.640	7.240	7.560	7.740
	Payload (kg) ¹	2.860	2.040	2.860	2.760	1.940	2.760
	Tow load (kg)	3.500	3.500	3.500	3.500	3.500	3.500
	Permissible max. train weight (kg)	13.500	13.000	14.000	13.500	13.000	14.000
DIMENSIONS	Total length (mm)	9.000	9.000	9.000	9.240	9.240	9.240
	Total width (mm)	2.500	2.500	2.500	2.500	2.500	2.500
	Total height (mm)	3.450	3.530	3.530	3.450	3.530	3.530
	Wheel base (mm)	4.455	4.520	4.520	4.670	4.520	4.520
	Lounge bench, left (mm)	1.740 x 1.000	1.740 x 1.000	1.740 x 1.000	1.440 x 1.000	1.440 x 1.000	1.440 x 1.000
	Couch, right (mm)	1.250 x 650	1.250 x 650	1.250 x 650	1.250 x 650	1.250 x 650	1.250 x 650
	Rear bed (mm)	2 x 2.000 x 1.060	2 x 2.000 x 1.060	2 x 2.000 x 1.060	2 x 2.000 x 1.060	2 x 2.000 x 1.060	2 x 2.000 x 1.060
	Folding bed (option) (mm)	2.100 x 1.300	2.100 x 1.300	2.100 x 1.300	2.100 x 1.300	2.100 x 1.300	2.100 x 1.300
	Rear garage door (clear height x width in mm)	1.230 x 1.120	1.230 x 1.120	1.230 x 1.120	1.230 x 1.120	1.230 x 1.120	1.230 x 1.120
€	255.500,00 €	270.500,00 €	276.500,00 €	257.500,00 €	272.500,00 €	278.500,00 €	

Prices in Euro (incl. 20 % VAT)

¹⁾ see back

TECHNICAL SPECIFICATIONS

MORELO PALACE LINER

PALACE LINER 90 LBX

PALACE LINER 90 M



incl. scooter garage



incl. scooter garage

	IVECO Eurocargo 100 E 25	Mercedes Benz Atego 923	Mercedes Benz Atego 924	IVECO Eurocargo 100 E 25	Mercedes Benz Atego 923	Mercedes Benz Atego 924
ENGINE	Serial diesel engine (cylinders)	6	4	6	6	4
	Cubic capacity (litres)	6,7	5,1	7,7	6,7	5,1
	Max. power (KW/HP)	185 / 251	170 / 231	175 / 238	185 / 251	170 / 231
	Max. torque (Nm)	850	900	1.000	850	900
	Emission class	EURO 6	EURO 6	EURO 6	EURO 6	EURO 6
WEIGHT	Technically permissible max. weight (kg) ¹	10.000	9.500	10.500	10.000	9.500
	Mass in running order (kg) ¹	7.240	7.560	7.740	7.240	7.560
	Payload (kg) ¹	2.760	1.940	2.760	2.760	1.940
	Tow load (kg)	3.500	3.500	3.500	3.500	3.500
	Permissible max. train weight (kg)	13.500	13.000	14.000	13.500	13.000
DIMENSIONS	Total length (mm)	9.240	9.240	9.240	9.240	9.240
	Total width (mm)	2.500	2.500	2.500	2.500	2.500
	Total height (mm)	3.450	3.530	3.530	3.450	3.530
	Wheel base (mm)	4.670	4.520	4.520	4.670	4.520
	Lounge bench, left (mm)	1.740 x 1.000	1.740 x 1.000	1.740 x 1.000	1.440 x 1.000	1.440 x 1.000
	Couch, right (mm)	1.250 x 650	1.250 x 650	1.250 x 650	1.250 x 650	1.250 x 650
	Rear bed (mm)	2 x 2.000 x 1.060	2 x 2.000 x 1.060	2 x 2.000 x 1.060	2.000 x 1.630	2.000 x 1.630
	Folding bed (option) (mm)	2.100 x 1.300	2.100 x 1.300	2.100 x 1.300	2.100 x 1.300	2.100 x 1.300
	Rear garage door (clear height x width in mm)	1.230 x 1.120	1.230 x 1.120	1.230 x 1.120	1.230 x 1.120	1.230 x 1.120
Price	257.500,00 €	272.500,00 €	278.500,00 €	257.500,00 €	272.500,00 €	278.500,00 €

Prices in Euro (incl. 20 % VAT)

¹⁾ see back

TECHNICAL SPECIFICATIONS

MORELO PALACE LINER

PALACE LINER 93 MB

PALACE LINER 95 GB



incl. scooter garage



Smart

	IVECO Eurocargo 100 E 25	Mercedes Benz Atego 923	Mercedes Benz Atego 924	IVECO Eurocargo 100 E 25	IVECO Eurocargo 120 E 28	Mercedes Benz Atego 924	Mercedes Benz Atego 1230
Serial diesel engine (cylinders)	6	4	6	6	6	6	6
Cubic capacity (litres)	6,7	5,1	7,7	6,7	6,7	7,7	7,7
Max. power (KW/HP)	185 / 251	170 / 231	175 / 238	185 / 251	205 / 279	175 / 238	220 / 299
Max. torque (Nm)	850	900	1.000	850	1.000	1.000	1.200
Emission class	EURO 6	EURO 6	EURO 6	EURO 6	EURO 6	EURO 6	EURO 6
Technically permissible max. weight (kg) ¹	10.000	9.500	10.500	10.000	11.990	10.500	11.990
Mass in running order (kg) ¹	7.540	7.860	8.040	7.590	8.190	8.090	8.560
Payload (kg) ¹	2.460	1.640	2.460	2.100	3.800	2.410	3.430
Tow load (kg)	3.500	3.500	3.500	3.500	3.500	3.500	3.500
Permissible max. train weight (kg)	13.500	13.000	14.000	13.500	15.490	14.000	15.490
Total length (mm)	9.500	9.500	9.500	9.960	9.960	9.960	9.960
Total width (mm)	2.500	2.500	2.500	2.500	2.500	2.500	2.500
Total height (mm)	3.450	3.530	3.530	3.450	3.600	3.530	3.680
Wheel base (mm)	4.815	4.820	4.820	5.000	5.175	4.820	4.820
Lounge bench, left (mm)	1.740 x 1.000	1.740 x 1.000	1.740 x 1.000	1.740 x 1.000	1.740 x 1.000	1.740 x 1.000	1.740 x 1.000
Couch, right (mm)	1.250 x 650	1.250 x 650	1.250 x 650	1.250 x 650	1.250 x 650	1.250 x 650	1.250 x 650
Rear bed (mm)	2.000 x 1.630	2.000 x 1.630	2.000 x 1.630	2.000 x 1.630	2.000 x 1.630	2.000 x 1.630	2.000 x 1.630
Folding bed (option) (mm)	2.100 x 1.300	2.100 x 1.300	2.100 x 1.300	2.100 x 1.300	2.100 x 1.300	2.100 x 1.300	2.100 x 1.300
Rear garage door(s) (clear height x width in mm)	1.230 x 1.120	1.230 x 1.120	1.230 x 1.120	1.600 x 1.900	1.600 x 1.900	1.600 x 1.900	1.600 x 1.900
	258.500,00 €	273.500,00 €	279.500,00 €	279.500,00 €	297.500,00 €	300.900,00 €	315.900,00 €

ENGINE

WEIGHT

DIMENSIONS

⊕

PALACE LINER

Prices in Euro (incl. 20 % VAT)

¹⁾ see back

TECHNICAL SPECIFICATIONS

MORELO PALACE LINER

PALACE LINER 103 GSB

PALACE LINER 108 GSB



	IVECO Eurocargo 120 E 28	Mercedes Benz Atego 1230	IVECO Eurocargo 120 E 28	Mercedes Benz Atego 1230
ENGINE	Serial diesel engine (cylinders)	6	6	6
	Cubic capacity (litres)	6,7	7,7	6,7
	Max. power (KW/HP)	205 / 279	220 / 299	205 / 279
	Max. torque (Nm)	1.000	1.200	1.000
	Emission class	EURO 6	EURO 6	EURO 6
WEIGHT	Technically permissible max. weight (kg) ¹⁾	11.990	11.990	11.990
	Mass in running order (kg) ¹⁾	8.540	8.910	8.740
	Payload (kg) ¹⁾	3.450	3.080	3.250
	Tow load (kg)	3.500	3.500	3.500
	Permissible max. train weight (kg)	15.490	15.490	15.490
DIMENSIONS	Total length (mm)	10.760	10.760	11.050
	Total width (mm)	2.500	2.500	2.500
	Total height (mm)	3.600	3.680	3.600
	Wheel base (mm)	5.670	5.660	5.670
	Lounge bench, left (mm)	1.740 x 1.000	1.740 x 1.000	1.740 x 1.000
	Couch, right (mm)	1.250 x 650	1.250 x 650	1.250 x 650
	Rear bed (mm)	2.000 x 1.630	2.000 x 1.630	2.000 x 1.630
	Folding bed (option) (mm)	2.100 x 1.300	2.100 x 1.300	2.100 x 1.300
	Rear garage door (clear height x width in mm)	1.600 x 1.900	1.600 x 1.900	1.600 x 1.900
	307.900,00 €	325.900,00 €	310.900,00 €	328.900,00 €

Prices in Euro (incl. 20 % VAT)

¹⁾ see back

TECHNICAL SPECIFICATIONS

MORELO PALACE LINER

PALACE LINER 90 LO

(incl. Slide-Out)



incl. scooter garage

PALACE LINER 95 MO

(incl. Slide-Out)



incl. scooter garage

IVECO Eurocargo
100 E 25

Mercedes Benz Atego
923

Mercedes Benz Atego
924

IVECO Eurocargo
100 E 25

Mercedes Benz Atego
924

	IVECO Eurocargo 100 E 25	Mercedes Benz Atego 923	Mercedes Benz Atego 924	IVECO Eurocargo 100 E 25	Mercedes Benz Atego 924
ENGINE	Serial diesel engine (cylinders)	6	4	6	6
	Cubic capacity (litres)	6,7	5,1	7,7	6,7
	Max. power (KW/HP)	185 / 251	170 / 231	175 / 238	185 / 251
	Max. torque (Nm)	850	900	1.000	850
	Emission class	EURO 6	EURO 6	EURO 6	EURO 6
WEIGHT	Technically permissible max. weight (kg) ¹⁾	10.000	9.500	10.500	10.000
	Mass in running order (kg) ¹⁾	7.490	7.810	7.990	7.940
	Payload (kg) ¹⁾	2.510	1.690	2.510	2.060
	Tow load (kg)	3.500	3.500	3.500	3.500
	Permissible max. train weight (kg)	13.500	13.000	14.000	13.500
DIMENSIONS	Total length (mm)	9.240	9.240	9.240	9.740
	Total width (mm)	2.500	2.500	2.500	2.500
	Total height (mm)	3.450	3.530	3.530	3.450
	Wheel base (mm)	4.670	4.520	4.520	5.000
	Lounge bench, left (mm)	1.540 x 1.000	1.540 x 1.000	1.540 x 1.000	1.540 x 1.000
	Couch, right (mm)	1.250 x 650	1.250 x 650	1.250 x 650	1.250 x 650
	Rear bed (mm)	2 x 2.000 x 1.060	2 x 2.000 x 1.060	2 x 2.000 x 1.060	2.000 x 1.630
	Folding bed (option) (mm)	2.100 x 1.300	2.100 x 1.300	2.100 x 1.300	2.100 x 1.300
	Rear garage door (clear height x width in mm)	1.230 x 1.120	1.230 x 1.120	1.230 x 1.120	1.230 x 1.120
Price	283.500,00 €	298.500,00 €	304.900,00 €	287.500,00 €	308.900,00 €

Prices in Euro (incl. 20 % VAT)

¹⁾ see back

TECHNICAL SPECIFICATIONS

MORELO PALACE LINER

PALACE LINER 97 GO

(incl. Slide-Out)



Smart

PALACE LINER 107 GSO

(incl. Slide-Out)



≤ 3,55 m

	IVECO Eurocargo 120 E 28	Mercedes Benz Atego 1230	IVECO Eurocargo 120 E 28	Mercedes Benz Atego 1230
ENGINE	Serial diesel engine (cylinders)	6	6	6
	Cubic capacity (litres)	6,7	7,7	6,7
	Max. power (KW/HP)	205 / 279	220 / 299	205 / 279
	Max. torque (Nm)	1.000	1.200	1.000
	Emission class	EURO 6	EURO 6	EURO 6
WEIGHT	Technically permissible max. weight (kg) ¹⁾	11.990	11.990	11.990
	Mass in running order (kg) ¹⁾	8.390	8.760	8.940
	Payload (kg) ¹⁾	3.600	3.230	3.050
	Tow load (kg)	3.500	3.500	3.500
	Permissible max. train weight (kg)	15.490	15.490	15.490
DIMENSIONS	Total length (mm)	9.990	9.990	11.050
	Total width (mm)	2.500	2.500	2.500
	Total height (mm)	3.600	3.680	3.600
	Wheel base (mm)	5.000	4.820	5.670
	Lounge bench, left (mm)	1.540 x 1.000	1.540 x 1.000	1.540 x 1.000
	Couch, right (mm)	1.250 x 650	1.250 x 650	1.250 x 650
	Rear bed (mm)	2.000 x 1.630	2.000 x 1.630	2.000 x 1.630
	Folding bed (option) (mm)	2.100 x 1.300	2.100 x 1.300	2.100 x 1.300
	Rear garage door (clear height x width in mm)	1.600 x 1.900	1.600 x 1.900	1.600 x 1.900
⊕	324.900,00 €	342.900,00 €	337.900,00 €	355.900,00 €

Prices in Euro (incl. 20 % VAT)

¹⁾ see back

STANDARD EQUIPMENT MORELO PALACE . PALACE LINER

	CHASSIS PALACE			
	IVECO Daily 7,49 t	IVECO Eurocargo Light 7,49 t		
ENGINE	Turbo diesel engine, with rear wheel drive	■	■	
	Fuel tank, in litres	90	115	
	Emission class EURO 6	AdBlue	AdBlue	
	Automatized transmission	×	□	
	Alternator	14 V / 210 A / 2.940 W	28 V / 120 A / 3.360 W	
	Additional alternator, for charging the leisure batteries while driving	×	14 V / 80 A / 1.120 W	
	CHASSIS	Tires rear axle with traction profile (Daily with Four Season)	225 / 75 R 16	225 / 75 R 17.5
		Dual-circuit compressed air brake and engine brake	×	■
		Disc brakes, on front and rear axles	■	■
Electronic anti-lock braking system (ABS)		■	■	
Traction control system (ASR)		■	■	
Electronical Stability Program (ESP)		■	■	
Breakdown set, with warning triangle, first-aid kit, warning light and wheel chock		■	■	
Air suspension on rear axle, with 'lifting and lowering' function		□	■	
SAFETY		Lane Departure Warning	×	■
	Emergency Brake Assist	×	■	
	Adaptive Cruise Control	×	■	
	Underride protection	■	■	
	CHASSIS PALACE LINER			
	IVECO Eurocargo	Mercedes Benz Atego		
ENGINE	Turbo diesel engine, with rear wheel drive	■	■	
	Fuel tank, in litres	190	180	
	Emission class EURO 6	AdBlue	AdBlue	
	Automatized transmission	6-speed	6-speed/8-speed from 12 t	
	Alternator	28 V / 120 A / 3.360 W	28 V / 150 A / 4.200 W	
	Additional alternator, for charging the leisure batteries while driving	14 V / 80 A / 1.120 W	×	
CHASSIS	Tires 9 t - 10 t chassis, rear axle with traction profile	245 / 70 R 17.5	245 / 70 R 17.5	
	Tires 12 t - 15 t chassis, rear axle with traction profile	285 / 70 R 19.5	285 / 70 R 19.5	
	Dual-circuit compressed air brake and engine brake	■	■	
	Disc brakes, on front and rear axles	■	■	
	Electronic anti-lock braking system (ABS)	■	■	
	Traction control system (ASR)	■	■	
	Electronical Stability Program (ESP)	■	■	
	Air suspension on rear axle only „Lifting and Lowering“	■	923 / 924	
	Air suspension on front and rear axle „Lifting and Lowering“	100 E 25 / 120 E 28	1230 / 1530	
	Breakdown set, with warning triangle, first-aid kit, warning light and wheel chock	■	■	
SAFETY	Lane Departure Warning	■	■	
	Emergency Brake Assist	■	■	
	Adaptive Cruise Control	■	×	
	Reinforced Motor Brake	×	■	
	Underride protection	■	■	

■ Standard equipment □ Special equipment × not available

STANDARD EQUIPMENT MORELO PALACE . PALACE LINER

COCKPIT . LIGHTS . STRUCTURE

COCKPIT	Driver and passenger seats, swiveling, with armrests and integrated belt system (standard for PALACE)
	Luxury air suspended driver and passenger seats, with integrated belt system, lumbar support, heating and armrests (optional for PALACE, standard for PALACE LINER)
	Roller plissee behind windscreen, electrically activated, privacy screen function
	Panoramic windscreen with laminated glass, tinted
	Flush, double-glazed driver's cab side windows, mechanically activated
	Air conditioning in driver's cab
	Cruise control
	Steering wheel, adjustable in height and angle (height only with Daily)
	Outside mirrors and windscreen wiper system in bus-style with wide-angle and front mirror
	Independent dashboard, with ambient lighting and cooled refreshment compartment
	Radio in driver's cab, with CD and MP3 player
	High-performance 2-way loudspeakers in driver's cab side panelling
	Sockets, 1 x 12 V, 1 x USB and 2 x 230 V
Optimized noise insulation of engine compartment	
Fully insulated driver's cab, new GRP module	
LIGHTS	Halogen main headlights, with optical lens and additional main beam
	Fog lights
	LED daytime running lights
	LED rear lights
STRUCTURE	Side walls and roof are 42 mm thick, 40 mm of which consists of closed-cell RTM hard foam
	Aluminium side bars on the roof, with rainwater channels to help keeping side walls clean
	Side walls in ALU-RTM-ALU sandwich design, smooth and high-gloss
	Roof in GRP-RTM-ALU sandwich design, hail protection and low heat conductivity
	Underfloor in GRP-RTM-GRP sandwich design, robust, corrosion-free, no timber used
	Cold-bridge-free wall joint technology, using highly compressed rigid PU profiles
	Garage door with electrical unlocking
	Lightning protection, Faraday cage
	Heated double floor, approximately 420mm high (Mercedes Atego ca. 480 mm), side access via external flaps
	"TOP-Class" entrance door, electrical, extra large with window, flyscreen and mechanical emergency unlocking
	Interior entrance step, heated and illuminated, with two incorporated pull-out drawers
	Exterior entrance step, 2-step, electrically extendable with safety circuit, for chassis up to 10 t
	Exterior entrance step, 2-step, electrically extendable with safety circuit, for chassis as from 12 t
	Rear garage, doors to the right and left, floor rails with lashing eyelets and 230 V socket (not for G models)
	Rear wall with fibreglass compound sandwich design, PU foam core
	Plastic windows in living area, double-glazed and tinted, collapsible outwards or sliding, with pleated blackout blind and flyscreen
	Thermally separated storage flaps with, carpeted on the inside
	Entirely wood-free exterior structure
	Front and lateral skirting, from highly sturdy fibreglass compound
External adhesives in black and silver	
Sturdy handle for easy entry, backlighted	

STANDARD EQUIPMENT MORELO PALACE . PALACE LINER

FOLDING BED . LIVING ROOM + BEDROOM . KITCHEN


FOLD. BED	Skylight, with flyscreen and pleated blackout blind	OPTIONAL
	Comfort bed suspension with multi-zone cold foam mattress	
	Lying surface approximately 2.000 x 1.300 mm	
	Dividing curtain	
LIVING ROOM + BEDROOM	Floor covering made from easy-care, high-grade vinyl	
	Flat living area floor, from the rear to the dashboard	
	Skylight, with flyscreen and pleated blackout blind in the bedroom	
	Double-glazed, panoramic roof window with flyscreen and pleated blackout blind in the living area	
	Lighting canopies with LED spots incl. indirect lighting, dimmable	
	Rear bed with comfortably suspended multi-zone mattress and adjustable head part	
	Wardrobes with LED lighting	
	Furniture fronts, with metal hinges	
	Microfibre upholstery, including driver and passenger seats	
	Multifunctional couch with ergonomic upholstery, and 2 belted seats in the direction of travel	
	Seating group with ergonomic upholstery, comfortable multi-layer design with diol-based padding and zip fasteners	
	Extensible, sturdy table, with extensive sliding range, laminated	
KITCHEN	Wall-mounted cabinet with LED lighting, including assortment of matching glassware, space for flat screen TV, incl. small pull-out furniture at the entrance	
	Sockets in the living area and in the bedroom	
	Wall panelling with colour-coordinated carpet	
	Elegant pleated curtains	
	190 litres AES refrigerator, with separate freezer compartment, automatic and manual energy selection	
	MORELOSAN kitchen worktop with seamlessly integrated wash/waste bowl and domestic drains	
	3-flame stainless steel gas cooker, installed countersunk with automatic ignition and glass cover	
	Single-lever mixer tap, chrome	
	Chrome rail mounted at the worktop	
	Drawers with soft closing and cutlery insert	
Double pull-out waste bin with two removable bins		
Skylight, with flyscreen and pleated blackout blind		
LED spots, in lighting canopy		
Sockets 2x 230 V		

ALDE SMART CONTROL

GET MORE FROM YOUR ALDE® HEATING SYSTEM

Alde® Smart Control consists of an electronic box connected to a TouchColor control unit and an app for your smartphone.

You can use Alde® Smart Control to control many heating system functions remotely, including the temperature, energy source selection and „hot water on/off“ feature. You




receive alarm messages regarding battery and temperature levels via text message.

OUR ADVICE

Alde® Smart Control is now available for MORELO ex works and can easily be retrofitted in many cases. Just ask your Alde® service partner.

www.alde.co.uk



STANDARD EQUIPMENT MORELO PALACE . PALACE LINER

BATHROOM . GAS + HEATING + WATER . ELECTRONICS . CONTROL PANEL

BATHROOM	Skylight, with flyscreen and pleated blackout blind
	Washstand, with seamlessly integrated sink and domestic drain
	Single-lever mixer tap, chrome
	Soap dispenser, cup holder and towel hook
	Lighted closet
	Separate shower, with wall rail, height-adjustable showerhead and drying rail
	Separate toilet area with luxury bathroom
	Toilet window, with flyscreen and pleated blackout blind with premium bathroom
	Ceramic toilet with 250 litres septic tank
	Toilet paper holder and toilet brush
	Spacious wardrobe with LED lighting
	LED-Spots
Sockets 2 x 230 V	
GAS + HEATING + WATER	Gas bottle compartment, for 2 x 11 kg gas bottles side by side, with gas controller gas leak protection, gas filter and automatic switchover
	120 litres gas tank for vehicles with slide-out
	5.500 W hot water gas central heating, with thermostat control, automatic ventilation valve and backflow shut-off
	Electrical heating element, 230 V, up to 3.000 W
	Engine heat exchanger, for using engine calories to heat up the living area
	Floor heating in living area and bathroom
	Adjustable heating circuit in rear garage
	Towel dryer radiator in bathroom, with thermostat control
	Integrated hot water boiler, serving all tapping points
	380 litres fresh water tank, 250 litres wastewater tank and 250 litres septic tank, situated in the heated double floor
	Emptying of wastewater tank, via drain tap with large cross section in heated double floor and drain hose with bayonet connection
	Domestic style wastewater pipes
Central pressure water supply	
ELECTRONICS	230 V socket in the garage
	230 V CEE connection, with insulated floor inlet
	140 Ah gel battery in intermediate floor including battery monitoring system with overloading and total discharge protection
	Automatic charger, electronically controlled, with battery temperature sensor, maximum charge rate of 25 A
CONTROL PANEL	Central control and monitoring panel, with touch screen
	Shut-off function for on-board electrical system, in case of undervoltage/overheating
	On-board electronics, microprocessor-controlled with bus technology
	Buttons for switching on/off, lighting, water pump and special equipment, including main switch for all consumers
	Alarm devices, for 'wastewater tank full', 'step extended', 'fresh water tank empty', reserve gas bottle in use' and diverse others
	LCD control panel, for monitoring external and internal temperature, external current supply, parallel battery circuit, battery voltage of vehicle and leisure battery
	LCD control panel, for monitoring the wastewater tank, fresh water tank, gas level (only when gas tank fitted), charging/discharging current, date and time with alarm function

SPECIAL EQUIPMENT MORELO PALACE . PALACE LINER

CHASSIS

Item / Weight ¹	CHASSIS PALACE - IVECO DAILY	IVECO Daily
011203 / 10	ZF 8-gear torque converter transmission	4.950,00 €
017000D / 15	Differential lock for rear axle	990,00 €
011230 / 15	Engine version C 21 3,0 litres, 151 kW / 205 HP (instead of 2,3 litres / 156 HP, only combined with 011203 torque converter transmission)	2.500,00 €
011218 / 98	Original retarder from Iveco (70 litres serial fuel tank)	7.990,00 €
018152 / 95	170 litres fuel tank (instead of serial standard) ²	1.990,00 €
018214D / 25	Air suspension on rear axle only (standard equipment for MORELO PALACE 90 G on IVECO Daily)	5.600,00 €
018212D / 64	Air suspension, front and rear axle, automatic leveling and various special functions (only combined with light metal rims)	9.890,00 €
018216D / 39	Air suspension, front and rear axle (for model PALACE 90 G on IVECO Daily, only combined with light metal rims)	4.290,00 €
018225 / 05	"Active-Air" Chassis (only in combination with air suspension on front and rear axle)	4.490,00 €
018160 / 0	Light metal rims „Radial“ on front axle, with spur widening and wheel trims on rear axle (spare wheel with with steel rim), steel valves	2.790,00 €
018162 / 0	Light metal rims „Radial“ front and rear axle, on front axle with spur widening (spare wheel with steel rim), steel valves	3.990,00 €
018178 / 0	Light metal rims "BiColor" on front axle, with spur widening and wheel trims on rear axle (spare wheel with steel rim), steel valves	2.790,00 €
018161D / 0	Light metal rims "BiColor" front and rear axle, on front axle with spur widening (spare wheel with steel rim), steel valves	3.990,00 €
018178-01 / 0	Light metal rims "Silver" on front axle, with spur widening and wheel trims on rear axle (spare wheel with steel rim), steel valves	2.790,00 €
018161-01D / 0	Light metal rims "Silver" front and rear axle, on front axle with spur widening (spare wheel with steel rim), steel valves	3.990,00 €
018170D/ 08	Spur widening on front axle, for steel rims	490,00 €
018181 / 08	Spur widening on rear axle, for steel rims	790,00 €
018175 / 15	Daily "wide axle" front axle (spur widening on front axle +200 mm)	7.290,00 €
018131D / 18	Electrical and technical preparation for trailer coupling	790,00 €
018099D / 64	Fixed trailer coupling up to max. 3.500 kg incl. electrical and technical preparation for trailer coupling	2.190,00 €
018120D / 07	Surcharge for removable trailer coupling head (only in combination with trailer coupling)	500,00 €
017008 / 0	LED headlights 12 V (only combined with rear axle air suspension)	2.190,00 €
018234D / 70	Hydraulic leveling jacks for Daily (only in combination with electrical package)	7.990,00 €
017100 / 40	XL-width 2.500 mm	5.000,00 €
017305 / 06	Morelo exclusive leather steering wheel, removable to improve seat rotation and deter theft	1.450,00 €
020206 / 04	Premium-Cockpit (comfort air vents, leather covering, cup holders, shelf with wooden frame, cup holder and cooling compartment)	850,00 €
052038 / 04	Heating for standard cab seats	580,00 €
052130 / 10	Luxury driver's cab seats, air suspended with lumbar support, armrests and heating	3.990,00 €
025034 / 01	Flush, double-glazed driver's cab side windows, electrically activated	1.250,00 €
021039 / 06	Double horn air fanfare (only in combination with luxury driver's cab seats)	890,00 €

CHASSIS

PALACE

PALACE LINER

Prices in Euro (incl. 20 % VAT)

¹⁾ Weight in kg ²⁾ by using the original tank sensor a filling level above 150 litres is indicated as „full“!

SPECIAL EQUIPMENT MORELO PALACE . PALACE LINER

CHASSIS

Item / Weight ¹⁾	CHASSIS PALACE - IVECO EUROCARGO 75 E 21	IVECO Eurocargo
011205 / 20	Automized transmission	3.500,00 €
017000E / 15	Differential lock for rear axle	790,00 €
018154 / 80	190 litres fuel tank	300,00 €
018190 / 25	Air suspension on rear axle only	3.600,00 €
013310 / 0	Polished light metal rims for Eurocargo 7,49 - 10t, front and rear axle, 17,5" (spare wheel with steel rim)	4.690,00 €
017200E / 04	Wheel trims in stainless steel, 17,5"	650,00 €
018230 / -17	Air pressure tank in aluminium instead of steel	450,00 €
018319 / 78	Spare wheel with bracket	550,00 €
018131E / 18	Electrical and technical preparation for trailer coupling	990,00 €
018099E / 64	Fixed trailer coupling up to max. 3.500 kg incl. electrical and technical preparation for trailer coupling	2.190,00 €
018120E / 07	Surcharge for removable trailer coupling head (only in combination with trailer coupling)	500,00 €
017027 / 0	LED headlights 24 V	2.190,00 €
018235E / 85	Hydraulic leveling jacks for Eurocargo (only in combination with electrical package)	7.990,00 €
017100 / 40	XL-width 2.500 mm	5.000,00 €
0173004 / 06	MORELO Exclusive leather steering wheel, removable to improve seat rotation and deter theft	1.450,00 €
020207 / 04	Premium-Cockpit (leather covering, cup holders, shelf with wooden frame, cup holder and cooling compartment)	850,00 €
052038 / 45	Heating for standard cab seats	580,00 €
052135 / 10	Luxury driver's cab seats, air suspended with lumbar support, armrests and heating	3.990,00 €
025036 / 01	Flush, double-glazed driver's cab side windows, electrically activated	1.250,00 €
021040 / 06	Double horn air fanfare (only in combination with luxury driver's cab seats)	890,00 €

CHASSIS

EXPERT ADVICE

HOME WHEREVER YOU ARE

When you buy a satellite system from ten Haaft, you are buying more than just a reliable brand product. You are also choosing our many years of experience, excellent service, intelligent technology and top quality!

Many service centres throughout Europe ensure reliability and rapid assistance.



tenHaaft
Innovative Mobile Technology

OUR ADVICE

Oyster® is the user-friendly satellite system that offers a wide variety of programmes and top-class convenience.



www.ten-haافت.de

Prices in Euro (incl. 20 % VAT)

¹⁾ Weight in kg

SPECIAL EQUIPMENT MORELO PALACE . PALACE LINER

CHASSIS

Item / Weight ¹⁾		
	CHASSIS PALACE LINER IVECO EUROCARGO 100 E 25 / 120 E 28	IVECO Eurocargo 10 t / 12 t
017000E / 15	Differential lock for rear axle	790,00 €
013305 / 0	Light metal rims for Eurocargo 12 t, front and rear axle, 19,5" (spare wheel with steel rim)	4.290,00 €
013310 / 0	Polished light metal rims for Eurocargo 7,49 - 10t, front and rear axle, 17,5" (spare wheel with steel rim)	4.690,00 €
018131 / 18	Electrical and technical preparation for trailer coupling	990,00 €
018099 / 64	Fixed trailer coupling up to max. 3.500 kg incl. electrical and technical preparation for trailer coupling	2.190,00 €
018120 / 07	Surcharge for removable trailer coupling head (only in combination with trailer coupling)	500,00 €
017007 / 0	LED headlights 24 V	2.190,00 €
018235E / 85	Hydraulic leveling jacks for Eurocargo (only in combination with electrical package)	7.990,00 €
018230/ -17	Air pressure tank in aluminium instead of steel	450,00 €
0173004 / 06	MORELO Exclusive leather steering wheel, removable to improve seat rotation and deter theft	1.450,00 €
025032 / 01	Flush, double-glazed driver's cab side windows, electrically activated	1.250,00 €
021040 / 06	Double horn air fanfare	890,00 €
	CHASSIS PALACE LINER MERCEDES BENZ ATEGO 923 / 924 / 1230	Mercedes Benz Atego 9 t / 12 t
018148 / 80	280 litres fuel tank (instead of 180 litres serial standard)	500,00 €
017212 / 0	Light metal rims ALCOA Dura Bright on front and rear axle 17,5" (spare wheel with steel rim) (MB Atego 923/924)	4.190,00 €
018169 / 0	Light metal rims ALCOA Dura Bright on front and rear axle 19,5" (spare wheel with steel rim) (MB Atego 1230/1530)	5.500,00 €
018131E / 18	Electrical and technical preparation for trailer coupling	990,00 €
018099E / 64	Fixed trailer coupling up to max. 3.500 kg incl. electrical and technical preparation for trailer coupling	2.190,00 €
018120E / 07	Surcharge for removable trailer coupling head (only in combination with trailer coupling)	500,00 €
017007 / 0	LED headlights 24 V	2.190,00 €
018239 / 85	Hydraulic leveling jacks for Mercedes (only in combination with electrical package)	7.990,00 €
025037 / 01	Flush, double-glazed driver's cab side windows, electrically activated	1.250,00 €
021040 / 06	Double horn air fanfare	890,00 €

Prices in Euro (incl. 20 % VAT)

¹⁾ Weight in kg

SPECIAL EQUIPMENT MORELO PALACE . PALACE LINER

STRUCTURE . KITCHEN . LIVING ROOM + BEDROOM

	Item / Weight ¹	all models	
STRUCTURE	020474 / 60	Aluminum outer walls in 1.4 mm sheet thickness (only PALACE LINER)	1.490,00 €
	022022 / 60	Electrically operated awning 6,0 m, with LED lighting ²	2.390,00 €
	022020 / 58	Manually operated awning 6,0 m, with LED lighting	1.890,00 €
	022040 / 01	Dimmable awning lighting with remote control	190,00 €
	025180 / 90	Insulated projecting glass windows instead of Plexiglas windows	4.990,00 €
	025091 / 04	Midi roof window, in bedroom (instead of standard mini heki)	690,00 €
	025092 / 07	Panoramic roof window, Heki 3, in bedroom	1.290,00 €
	025106 / 10	Double panoramic roof window, 2 x Heki 3 in living area (not in combination with folding bed)	1.590,00 €
	025107 / 18	Double panoramic roof window, 2 x Heki 4, electric with rain sensor (not in combination with folding bed)	3.390,00 €
	025095 / 04	Panoramic roof window, Heki 4 in living area, electric with rain sensor (instead of manual panoramic roof window)	1.350,00 €
	037500 / 07	Furniture safe with electronic locking and automatic locking system	320,00 €
	020285 / 02	Carbon look exterior	1.490,00 €
	031945 / 05	Double floor lighting	690,00 €
	018900 / 10	Electric opening and closing for rear hatch (G models only)	990,00 €
	KITCHEN	043080 / 15	Kitchen worktop in mineral material, matt-finish, flush sink covers, in various designs
043052 / 22		Microwave oven in stainless steel, with grill function underneath of worktop (230 V via mains connection)	1.290,00 €
043062 / 25		Dishwasher underneath worktop behind furniture flap	1.190,00 €
043254 / 05		Additional pull-out drawers in kitchen block instead of hinged door	390,00 €
043260 / 05		Nespresso coffee machine, with shelf, capsule rack and 230 V socket	490,00 €
025161 / 05		Extractor fan in the kitchen area instead of standard mini heki	390,00 €
LIVING ROOM + BEDROOM	051967 / 43	Mechanically activated folding bed (instead of front overhead lockers)	1.490,00 €
	051962 / 47	Electrically activated folding bed (instead of front overhead lockers)	2.290,00 €
	042204 / 07	Height-adjustable table column, with extra cushion insert (only for standard lounge seating group)	790,00 €
	050600 / 05	Wall and ceiling covering in smooth finish, with artificial leather	1.500,00 €
	050644 / 05	Separated L-beds with bedside table	2.390,00 €
	035252 / 97	Bar seating group (passenger's side), with adjustable single seat and multifunctional bench (incl. homologation for 5 persons)	2.290,00 €
	042904 / 35	NOVEL kitchen/seating group: Kitchen worktop in mineral material, double sink with generous worktop, pull-out drawers in the kitchen block, Nespresso coffee machine in overhead locker, electrically lowerable, Kcapsule rack and 230 V socket ² (Serial standard with all 0-layouts)	5.290,00 €
	035250 / -06	Single-seated sofa instead of standard L-shaped seating group	290,00 €
	036600 / 0	Change of pattern for furniture fronts, price per unit, position and number can be freely chosen	90,00 €
	044102 / 05	Central vacuum cleaner, with convenient emptying	990,00 €
	036220 / 05	Rear bed with EvoPore multi-zone mattress and „Watergel“ topping	490,00 €

Prices in Euro (incl. 20 % VAT)

1) Weight in kg 2) only combined with Electrical Package

SPECIAL EQUIPMENT MORELO PALACE . PALACE LINER

BEDROOM . BATHROOM . ELECTRONICS

	Item / Weight ¹⁾	all models	
BEDROOM	036146 / 07	Rear bed with lying surface over the entire width, for L-layouts	990,00 €
	036147 / 13	Rear bed with lying surface over the entire width, for M-layouts, overhead lockers like in L-version	1.990,00 €
	035985 / 15	1 belted seat for 1 person on multifunctional couch driver's side (only for slideout models)	3.500,00 €
	035986 / 15	2 belted seats for 2 persons on multifunctional couch driver's side (only for slideout models)	3.500,00 €
	042850 / 0	Supplement for version TREND (furniture corpus in Palisander)	2.500,00 €
BATHROOM	036130 / 0	Ceramic toilet bowl for cassette toilet, including SOG toilet ventilation (instead of standard fixed-tank toilet)	free of charge
	035990 / 05	Greywater pump for transfer of wastewater into the toilet tank	890,00 €
	036071 / 20	Luxury bathroom with separate toilet area and mini roof window	1.990,00 €
	036068 / 0	Towel radiator in chrome finish instead of white	790,00 €
	036033 / 03	Oriental shower for premium bathroom	300,00 €
ELECTRONICS	031050 / 02	Alarm system	1.290,00 €
	025043 / 30	Roof air conditioning, for living area with infrared remote control (total vehicle height + 130 mm)	2.890,00 €
	025044 / 30	Roof air conditioning, for bedroom with infrared remote control (not in combination with panoramic roof window - total vehicle height + 130 mm)	2.890,00 €
	037196 / 15	Solar panel, with 120 W maximum power	1.490,00 €
	037197 / 30	Solar panels, with 2 x 120 W maximum power	2.190,00 €
	037199 / 60	Solar panels, with 4 x 120 W maximum power, with heavy duty charger (if enough space on the roof)	3.990,00 €
	031345 / 110	Electrical Package „Energy 420 Premium“ (instead of serial standard) Gel batteries 2 x 210 AH, 80 A charger, sine wave inverter up to 1.800 W, fully automatic top class battery protection, Premium control panel, 230 V socket in rear garage	4.190,00 €
	031346 / 110	Electrical Package „Masterpower Premium“ (instead of serial standard) Gel batteries 2 x 210 AH, combined charger/inverter 100 A/2.200 W, with power sharing, fully automatic top class battery protection, Premium control panel, 230 V socket in rear garage	6.290,00 €
	031347 / 35	Electrical Package „Masterpower Lithium Premium“ (instead of serial standard) Lithium battery 1 x 360 AH, combined Mastervolt charger/inverter 150 A/3.000 W, with power sharing, fully automatic top class battery protection, Premium control panel, 230 V socket in rear garage	11.990,00 €
	031447-1 / 58	Additional Lithium battery 360 AH (only in combination with electrical package „Lithium Power Premium“ (technical examination reserved)	5.900,00 €
031450 / 05	Sine wave inverter 300 W (with separate socket and on/off switch for continuous use of small appliances, f.e. a respirator)	450,00 €	

Prices in Euro (incl. 20 % VAT)

¹⁾ Weight in kg

SPECIAL EQUIPMENT MORELO PALACE . PALACE LINER

MULTIMEDIA . GAS + HEATING + WATER . UPHOLSTERY + DECORATION

Item / Weight ¹⁾		all models	
MULTIMEDIA	037013 / 08	Navigation system with 8" touch screen panel and DAB / DAB+ tuner, 4 additional loudspeakers, incl. twin reversing camera with shutter and hands-free set for telephone with Bluetooth	3.390,00 €
	037102 / 04	Twin reversing camera with shutter	1.290,00 €
	037240 / 46	Satellite TV system, with 24" flat screen underneath cabinet in entrance area (left-hand side), 85 cm dish, fully automatic orientation, multi-user facility via TWIN-LNB and 24" flat screen TV in bedroom (total vehicle height + 130 mm)	5.490,00 €
	037245 / 56	Satellite TV system, with 32" flat screen in wall-mounted cabinet (right-hand side), electrically lowerable, 85 cm dish, fully automatic orientation, multi-user facility via TWIN-LNB, 24" flat screen TV in bedroom, ceiling high double drawer cabinet (total vehicle height + 130 mm)	6.290,00 €
	037248 / 54	Satellite TV system, with 32" flat screen mounted overhead above dashboard, electrically lowerable, 85 cm dish, fully automatic orientation, multi-user facility via TWIN-LNB, 24" flat screen TV in bedroom, big glass cabinet in the entrance area to the left with small single drawer cabinet - not in combination with fold-down bed (total vehicle height + 130 mm)	6.290,00 €
	037062 / 15	Teufel Soundbar 2.1 (only possible in combination with ref. 037245)	890,00 €
GAS + HEATING + WATER	034202 / 03	External shower on the driver's side in the rear	300,00 €
	033020 / 02	Gas alarm, to monitor living area	420,00 €
	018600 / 15	Diesel auxiliary heating, with convenient continuous heating via heat exchanger (5.200 W), including timer	2.950,00 €
	033026 / 03	Outside gas point, on side wall at passenger's side	290,00 €
	033005 / 88	120 litres gas tank, with remote filling in the side wall and level indicator in control panel display	2.590,00 €
	033006 / 146	195 litres gas tank, with remote filling in the side wall and level indicator in control panel display (if enough space underneath chassis)	2.950,00 €
	023110 / 40	2.600 W gas generator, fixed installation (only in combination with gas tank)	5.290,00 €
	034206 / 0	450 litres fresh water tank / 300 litres wastewater tank / 300 litres septic tank, instead of serial tanks (only for Mercedes Atego)	1.490,00 €
UPHOLSTERY + DECORATION	050100 / 0	Microfibre upholstery, in variety of patterns	■
	050505 / 0	BiColour microfibre upholstery, in variety of patterns	300,00 €
	050524 / 20	Fabric-Leather "Trendline" upholstery combination, in variety of patterns	2.990,00 €
	050500 / 27	Leather upholstery, in variety of patterns	3.590,00 €
	050506 / 27	BiColor leather upholstery, in variety of patterns	3.890,00 €
	051305 / 15	Living area carpet, in the colours Coco 830 beige, 865 grey-brown and schoko	990,00 €
	051311 / 0	Living area carpet in special colour	1.140,00 €
	051276 / 05	Decoration package "Trendline", consisting of 8 cushions and Trendline decorative curtains instead of the serial standard ones, in variety of patterns	650,00 €
	051271 / -	Venetian blinds in the living room, pleated blinds in the bedroom	590,00 €
	051272 / -	Venetian blinds in the living room and in the bedroom	1.090,00 €
	090000 / 0	Vehicle delivery at the factory, with extensive briefing in German language, handover inspection, diesel tank filling and factory tour	1.590,00 €

Prices in Euro (incl. 20 % VAT)

¹⁾ Weight in kg ■ Standard equipment

ALKOVEN 86 FB



ALKOVEN 90 LB



ALKOVEN 95 MB



ALKOVEN 95 GB



ALKOVEN 103 GB



ALKOVEN 108 GSB



ALKOVEN



ALKOVEN 86 FB

ALKOVEN 90 LB



incl. scooter garage



incl. scooter garage

IVECO Eurocargo
75 E 21*

Mercedes Atego
923*

IVECO Eurocargo
75 E 21*

Mercedes Atego
923*

	IVECO Eurocargo 75 E 21*		Mercedes Atego 923*	
	IVECO Eurocargo 75 E 21*	Mercedes Atego 923*	IVECO Eurocargo 75 E 21*	Mercedes Atego 923*
ENGINE	Serial diesel engine (cylinders)	4	4	4
	Cubic capacity (litres)	4,5	5,1	4,5
	Max. power (KW/HP)	154 / 210	170 / 231	154 / 210
	Max. torque (Nm)	750	900	750
	Emission class	EURO 6	EURO 6	EURO 6
WEIGHT	Technically permissible max. weight (kg) ¹	7.490	9.500	7.490
	Mass in running order (kg) ¹	6.250	6.870	6.450
	Payload (kg) ¹	1.240	2.630	1.040
	Tow load (kg)	3.500	3.500	3.500
	Permissible max. train weight (kg)	10.990	13.000	10.990
DIMENSIONS	Total length (mm)	8.600	8.600	9.000
	Total width (mm)	2.400	2.400	2.400
	Total height (mm)	3.520	3.580	3.520
	Wheel base (mm)	4.455	4.520	4.455
	Lounge bench, left (mm)	2.020 x 1.000	2.020 x 1.000	2.020 x 1.000
	Couch, right (mm)	1.350 x 650	1.350 x 650	1.350 x 650
	Rear bed (mm)	1.910 x 1.580	1.910 x 1.580	2 x 2.000 x 1.060
	Alcove (mm)	2.000 x 1.780	2.000 x 1.780	2.000 x 1.780
	Rear garage door (clear height x width in mm)	1.230 x 1.120 ²	1.230 x 1.120 ²	1.230 x 1.120
	227.500,00 €	252.500,00 €	230.500,00 €	255.500,00 €

Prices in Euro (incl. 20 % VAT)

¹) Heavier chassis on request ¹) see back ²) driver's side: 650 x 950 mm

TECHNICAL SPECIFICATIONS

MORELO PALACE ALKOVEN

ALKOVEN 95 MB

ALKOVEN 95 GB



incl. scooter garage



Smart

	IVECO Eurocargo 120 E 28	Mercedes Atego 1230	IVECO Eurocargo 120 E 28	Mercedes Atego 1230
ENGINE	Serial diesel engine (cylinders)	6	6	6
	Cubic capacity (litres)	6,7	7,7	6,7
	Max. power (KW/HP)	205 / 279	220 / 299	205 / 279
	Max. torque (Nm)	1.000	1.200	1.000
	Emission class	EURO 6	EURO 6	EURO 6
WEIGHT	Technically permissible max. weight (kg) ¹⁾	11.990	11.990	11.990
	Mass in running order (kg) ¹⁾	7.990	8.310	8.390
	Payload (kg) ¹⁾	4.000	3.680	3.600
	Tow load (kg)	3.500	3.500	3.500
	Permissible max. train weight (kg)	15.490	15.490	15.490
DIMENSIONS	Total length (mm)	9.500	9.500	9.850
	Total width (mm)	2.500	2.500	2.500
	Total height (mm)	3.700	3.760	3.700
	Wheel base (mm)	4.815	4.820	5.000
	Lounge bench, left (mm)	2.020 x 1.000	2.020 x 1.000	2.020 x 1.000
	Couch, right (mm)	1.350 x 650	1.350 x 650	1.350 x 650
	Rear bed (mm)	2.000 x 1.630	2.000 x 1.630	2.000 x 1.630
	Alcove (mm)	2.000 x 1.780	2.000 x 1.780	2.000 x 1.780
	Rear garage door(s) (clear height x width in mm)	1.230 x 1.120	1.230 x 1.120	1.600 x 1.900
⊕	259.500,00 €	279.500,00 €	279.500,00 €	299.500,00 €

Prices in Euro (incl. 20 % VAT)

¹⁾ see back

ALKOVEN 103 GB

ALKOVEN 108 GSB



Fiat 500



≤ 3,85 m

	IVECO Eurocargo 120 E 28	Mercedes Atego 1230	IVECO Eurocargo 120 E 28	Mercedes Atego 1230
ENGINE	Serial diesel engine (cylinders)	6	6	6
	Cubic capacity (litres)	6,7	7,7	6,7
	Max. power (KW/HP)	205 / 279	220 / 299	205 / 279
	Max. torque (Nm)	1.000	1.200	1.000
	Emission class	EURO 6	EURO 6	EURO 6
WEIGHT	Technically permissible max. weight (kg) ¹⁾	11.990	11.990	11.990
	Mass in running order (kg) ¹⁾	8.840	9.160	9.040
	Payload (kg) ¹⁾	3.150	2.830	2.950
	Tow load (kg)	3.500	3.500	3.500
	Permissible max. train weight (kg)	15.490	15.490	15.490
DIMENSIONS	Total length (mm)	10.990	10.990	11.190
	Total width (mm)	2.500	2.500	2.500
	Total height (mm)	3.700	3.760	3.700
	Wheel base (mm)	5.670	5.660	5.800
	Lounge bench, left (mm)	2.020 x 1.000	2.020 x 1.000	2.020 x 1.000
	Couch, right (mm)	1.350 x 650	1.350 x 650	1.350 x 650
	Rear bed (mm)	2.000 x 1.630	2.000 x 1.630	2.000 x 1.630
	Alcove (mm)	2.000 x 1.780	2.000 x 1.780	2.000 x 1.780
	Rear garage door (clear height x width in mm)	1.600 x 1.900	1.600 x 1.900	1.600 x 1.900
	288.500,00 €	299.500,00 €	292.500,00 €	312.500,00 €

Prices in Euro (incl. 20 % VAT)

¹⁾ see back

STANDARD EQUIPMENT MORELO PALACE ALKOVEN

ENGINE . CHASSIS . SAFETY

		IVECO Eurocargo 75 E 21	IVECO Eurocargo 120 E 28
ENGINE	CHASSIS PALACE ALKOVEN		
	Turbo diesel engine, with rear wheel drive	■	■
	Fuel tank, in litres	190	190
	Emission class EURO 6	AdBlue	AdBlue
	Automatized transmission	6-speed	6-speed
	Alternator	28 V / 120 A / 2.160 W	28 V / 120 A / 2.160 W
CHASSIS	Additional alternator, for charging the leisure batteries while driving	14 V / 80 A / 1.120 W	14 V / 80 A / 1.120 W
	Tires rear axle with traction profile (M+S)	225 / 70 R 17.5	285 / 70 R 19.5
	Dual-circuit compressed air brake and engine brake	■	■
	Disc brakes, on front and rear axles	■	■
	Electronic anti-lock braking system (ABS)	■	■
	Traction control system (ASR)	■	■
	Electronical Stability Program (ESP)	■	■
	Differential lock for rear axle	■	■
	Air suspension on rear axle only „Lifting and Lowering“	■	×
	Air suspension on front and rear axle „Lifting and Lowering“	×	■
SAFETY	Breakdown set, with warning triangle, first-aid kit, warning light and wheel chock	■	■
	Lane Departure Warning	■	■
	Emergency Brake Assist	■	■
	Adaptive Cruise Control	■	■
	Underride protection front and rear	■	■
		Mercedes Benz Atego 923	Mercedes Benz Atego 1230
ENGINE	CHASSIS PALACE ALKOVEN		
	Turbo diesel engine, with rear wheel drive	■	■
	Fuel tank, in litres	180	180
	Emission class EURO 6	AdBlue	AdBlue
	Automatized transmission	6-speed	8-speed
	Alternator	28 V / 150 A / 4.200 W	28 V / 150 A / 4.200 W
CHASSIS	Additional alternator, for charging the leisure batteries while driving	×	×
	Tires rear axle with traction profile (M+S)	245 / 70 R 17.5	285 / 70 R 19.5
	Dual-circuit compressed air brake and engine brake	■	■
	Disc brakes, on front and rear axles	■	■
	Electronic anti-lock braking system (ABS)	■	■
	Traction control system (ASR)	■	■
	Electronical Stability Program (ESP)	■	■
	Differential lock for rear axle	■	■
	Air suspension on rear axle only „Lifting and Lowering“	■	×
	Air suspension on front and rear axle „Lifting and Lowering“	×	■
SAFETY	Breakdown set, with warning triangle, first-aid kit, warning light and wheel chock	■	■
	Lane Departure Warning	■	■
	Emergency Brake Assist	■	■
	Reinforced Engine Brake	■	■
	Underride protection front and rear	■	■

STANDARD EQUIPMENT MORELO PALACE ALKOVEN

COCKPIT . LIGHTS . STRUCTURE

COCKPIT	Air suspended driver and passenger seats, with lumbar support and heating
	Air conditioning in driver's cab
	Cruise control
	Steering wheel, adjustable in height and angle (height only with Daily)
	Radio in driver's cab, with bluetooth, CD and MP3 player
	Electric windows for driver's and passenger's side
LIGHTS	Halogen main headlights, with optical lens and additional main beam
	Fog lights
	LED rear lights, with chrome ring
STRUCTURE	Side walls and roof are 42 mm thick, 40 mm of which consists of closed-cell RTM hard foam
	Aluminium side bars on the roof, with rainwater channels to help keeping side walls clean
	Side walls in ALU-RTM-ALU sandwich design, smooth and high-gloss
	Roof in GRP-RTM-ALU sandwich design, hail protection and low heat conductivity
	Underfloor in GRP-RTM-GRP sandwich design, robust, corrosion-free, no timber used
	Cold-bridge-free wall joint technology, using highly compressed rigid PU profiles
	Garage door with electrical unlocking
	Lightning protection, Faraday cage
	Heatable double floor, approximately 420 mm high, side access via external flaps
	"TOP-Class" entrance door, extra large with window, flyscreen and mechanical emergency unlocking
	Interior entrance step, heated, with two incorporated pull-out drawers
	Exterior entrance step, 2-step, electrically extendable with safety circuit, 3-step for 12 t chassis
	Rear garage, doors to the right and left, floor rails with lashing eyelets and 230 V socket (not for G models)
	Rear wall with fibreglass compound sandwich design, PU foam core
	Plastic windows in living area, double-glazed and tinted, collapsible outwards or sliding, with pleated blackout blind and flyscreen
	Thermally separated storage flaps with, carpeted on the inside
	Entirely wood-free exterior structure
Front and lateral skirting, from highly sturdy fibreglass compound	
External adhesives in black and silver	
Sturdy handle for easy entry, backlighted	

STANDARD EQUIPMENT MORELO PALACE ALKOVEN

LIVING ROOM + BEDROOM . KITCHEN . BATHROOM

LIVING ROOM + BEDROOM	Floor covering made from easy-care, high-grade vinyl
	Skylight, with flyscreen and pleated blackout blind in the bedroom
	Double-glazed, panoramic roof window with flyscreen and pleated blackout blind in the living area
	Lighting canopies with LED spots incl. indirect lighting, dimmable
	Rear bed with comfortably suspended multi-zone mattress and adjustable head part
	Wardrobes with LED lighting
	Furniture fronts, with metal hinges
	Microfibre upholstery in the living room, standard fabric upholstery of the cab seats
	Multifunctional couch with 2 belted seats in the direction of travel
	Seating group with ergonomic upholstery, comfortable multi-layer design with diol-based padding and zip fasteners
	Extensible, sturdy table, with extensive sliding range, laminated
	Wall-mounted cabinet with LED lighting, including assortment of matching glassware, space for flat screen TV, incl. small pull-out furniture at the entrance
	Sockets in the living area and in the bedroom
	Wall panelling with colour-coordinated carpet
Elegant pleated curtains	
KITCHEN	190 litres AES refrigerator, with separate freezer compartment, automatic and manual energy selection
	MORELOSAN kitchen worktop with seamlessly integrated wash/waste bowl and domestic drains
	3-flame stainless steel gas cooker, installed countersunk with automatic ignition and glass cover
	Single-lever mixer tap, chrome
	Chrome rail mounted at the worktop
	Drawers with super-soft closing
	Double pull-out waste bin with two removable bins
	Skylight, with flyscreen and pleated blackout blind
	LED spots, in lighting canopy
Sockets 2 x 230 V	
BATHROOM	Skylight, with flyscreen and pleated blackout blind
	Washstand, with seamlessly integrated sink and domestic drain
	Single-lever mixer tap, chrome
	Soap dispenser, cup holder and towel hook
	Lighted closet
	Separate shower, with wall rail, height-adjustable showerhead and drying rail
	Separate toilet area with luxury bathroom
	Toilet window, with flyscreen and pleated blackout blind with premium bathroom
	Ceramic toilet with 250 litres septic tank
	Toilet paper holder and toilet brush
	Spacious wardrobe with LED lighting
LED-Spots	
Sockets 2 x 230 V	

STANDARD EQUIPMENT MORELO PALACE ALKOVEN

GAS + HEATING + WATER . ELECTRONICS . CONTROL PANEL

GAS + HEATING + WATER	Gas bottle compartment, for 2 x 11 kg gas bottles side by side, with gas controller and automatic switchover
	5,500 W hot water gas central heating, with thermostat control, automatic ventilation valve and backflow shut-off
	Electrical heating element, 230 V, up to 3,000 W
	Engine heat exchanger, for using engine calories to heat up the living area
	Floor heating in living area and bathroom
	Heating circuit of the rear garage can be regulated
	Towel dryer radiator in bathroom, with thermostat control
	Integrated hot water boiler, serving all tapping points
	380 litres fresh water tank, 250 litres wastewater tank and 250 litres septic tank, situated in the heated double floor
	Emptying of wastewater tank, via drain tap with large cross section in heated double floor and drain hose with bayonet connection
	Domestic style wastewater pipes
Central pressure water supply	
ELECTRONICS	230 V socket in the garage
	230 V CEE connection, with insulated floor inlet
	140 Ah gel battery in intermediate floor including battery monitoring system with overloading and total discharge protection
	Automatic charger, electronically controlled, with battery temperature sensor, maximum charge rate of 25 A
CONTROL PANEL	Central control and monitoring panel, with colour touch screen
	Shut-off function for on-board electrical system, in case of undervoltage/overheating
	On-board electronics, microprocessor-controlled with bus technology
	Buttons for switching on/off, lighting, water pump and special equipment, including main switch for all consumers
	Alarm devices, for 'wastewater tank full', 'step extended', 'fresh water tank empty', 'reserve gas bottle in use' and diverse others
	LCD control panel, for monitoring external and internal temperature, external current supply, parallel battery circuit, battery voltage of vehicle and leisure battery
	LCD control panel, for monitoring the wastewater tank, fresh water tank, gas level (only when gas tank fitted), charging/discharging current, date and time with alarm function

EXPERT ADVICE	<p>NEW CAMPER CENTRES</p> <p>AVAILABLE THROUGHOUT EUROPE SO YOU CAN RIDE WITHOUT WORRY</p> <p>We keep you on the road. With 48 highly trained camper centres in Europe, we have laid the foundation for exceptional service for our motorhome customers. In order to enable you to continue on your journey as quickly as possible, we have implemented a standard defined specifically for motorhome customers for our workshops.</p>	<p>IVECO</p> <p>The camper centres are specifically trained above and beyond the standards set by law in order to provide the perfect support for the base chassis. More than 350 support points are in the works across Europe. This widespread support network allows us to create a special, unprecedented exchange of information for the motorhome industry within IVECO and to specialise our service even further.</p> <p>Your IVECO motorhome experts</p> <p>www.iveco.com</p>	
---------------	---	--	---

ALKOVEN

SPECIAL EQUIPMENT MORELO PALACE ALKOVEN

CHASSIS

Item / Weight ¹⁾		
	CHASSIS PALACE ALKOVEN - IVECO EUROCARGO	IVECO Eurocargo
013305 / 0	Light metal rims for Eurocargo 12.000 kg, front and rear axle, 19,5" (spare wheel with steel rim)	4.290,00 €
013310 / 0	Polished light metal rims for Eurocargo 7,49 - 10 t, front and rear axle, 17,5" (spare wheel with steel rim)	4.690,00 €
018131 / 18	Electrical and technical preparation for trailer coupling	990,00 €
018099 / 64	Fixed trailer coupling up to max. 3.500 kg incl. electrical and technical preparation for trailer coupling	2.190,00 €
018120 / 07	Surcharge for removable trailer coupling head (only in combination with trailer coupling)	500,00 €
017011 / 0	Xenon headlights	990,00 €
018235D / 85	Hydraulic leveling jacks (only in combination with electrical package)	7.990,00 €
017200 / 04	Wheel trims in stainless steel, 17,5"	650,00 €
017201 / 05	Wheel trims in stainless steel, 19,5"	850,00 €
017432 / 04	Front bumper and wheel arches painted in vehicle colour (Iveco incl. fog lights)	1.990,00 €
017430 / 0	Central locking for driver and passenger door with remote control	650,00 €
021041 / 06	Double horn air fanfare	890,00 €
017300 / 01	Multifunctional steering wheel	350,00 €
018326 / 04	Airbag driver's side	1.690,00 €
	CHASSIS PALACE ALKOVEN MERCEDES BENZ ATEGO	Mercedes Benz Atego
018148 / 80	280 litres fuel tank (instead of 180 litres serial standard)	500,00 €
017212 / 0	Light metal rims ALCOA Dura Bright on front and rear axle 17,5" (spare wheel with steel rim) (MB Atego 923/924)	4.190,00 €
018169 / 0	Light metal rims ALCOA Dura Bright on front and rear axle 19,5" (spare wheel with steel rim) (MB Atego 1230/1530)	5.500,00 €
018131 / 18	Electrical and technical preparation for trailer coupling	990,00 €
018099 / 64	Fixed trailer coupling up to max. 3.500 kg incl. technical and electrical preparation for trailer coupling	2.190,00 €
018120 / 07	Surcharge for removable trailer coupling head (only in combination with trailer coupling)	500,00 €
017027 / 0	LED headlights 24 V	2.190,00 €
018239 / 85	Hydraulic leveling jacks for Atego (only in combination with electrical package)	7.990,00 €
017200 / 04	Stainless steel wheel covers, 17,5"	650,00 €
017201 / 05	Stainless steel wheel covers, 19,5"	850,00 €
017432 / 04	Front bumper and wheel arch painted in vehicle color	1.990,00 €
017430 / 0	Central locking for driver and passenger door with remote control	790,00 €
021042 / 06	Double horn air fanfare	890,00 €
017301 / 01	Multifunctional steering wheel Mercedes Benz	690,00 €

Prices in Euro (incl. 20 % VAT)

¹⁾ Weight in kg

SPECIAL EQUIPMENT MORELO PALACE ALKOVEN

STRUCTURE . KITCHEN . LIVING + BED ROOM

	Item / Weight ¹	all models	
STRUCTURE	020474 / 60	Aluminium exterior walls in 1,4 mm (as from 12 to chassis)	1.490,00 €
	022022 / 60	Electrically operated awning 6,0 m, with LED lighting ²	2.390,00 €
	022020 / 58	Manually operated awning 6,0 m, with LED lighting	1.890,00 €
	022040 / 0	Dimmable awning lighting with remote control	190,00 €
	025180 / 40	Insulated projecting glass windows instead of Plexiglas windows	4.990,00 €
	025091 / 04	Midi roof window, in bedroom (instead of standard mini heki)	690,00 €
	025092 / 07	Panoramic roof window, Heki 3, in bedroom (instead of standard mini heki)	1.290,00 €
	025095 / 04	Panoramic roof window, Heki 4 in living area, electric with rain sensor (instead of manual panoramic roof window)	1.350,00 €
	037500 / 07	Furniture safe with electronic locking and automatic locking system	320,00 €
	020271 / 02	Carbon look exterior	1.490,00 €
	031945 / 05	Double floor lighting	690,00 €
	018900 / 10	Electric opening and closing for rear hatch (G models only)	990,00 €
	050055 / 26	2 additional seat belts contrary to the direction of travel (incl. homologation for 6 persons)	3.000,00 €
	017100/ 40	XL-width 2.500 mm (as from model 95 standard)	5.000,00 €
	KITCHEN	043081 / 15	Kitchen worktop in mineral material, matt-finish, flush sink covers, in various designs
043052 / 22		Microwave oven in stainless steel, with grill function underneath of worktop (230 V via mains connection)	1.290,00 €
043062 / 25		Dishwasher underneath worktop behind furniture flap	1.190,00 €
043202 / 05		Additional pull-out drawers in kitchen block instead of hinged door	390,00 €
043213 / 05		Nespresso coffee machine, with shelf, capsule rack and 230 V socket ²	490,00 €
025161 / 05		Extractor fan in the kitchen area instead of standard mini heki	390,00 €
LIVING + BED ROOM	042202 / 07	Height-adjustable table column, with extra cushion insert	790,00 €
	050600 / 05	Wall and ceiling covering in smooth finish, with artificial leather	1.500,00 €
	050634 / 05	Separated L-beds with bedside table	2.390,00 €
	036600 / -	Change of pattern for furniture fronts, price per unit, position and number can be freely chosen	90,00 €
	044102 / 05	Central vacuum cleaner, with convenient emptying	990,00 €
	036220 / 05	Rear bed with EvoPore multi-zone mattress and "WATERGEL" topping	490,00 €
	036146 / 07	Rear bed with lying surface over the entire width, for L-layouts	990,00 €
	036147 / 13	Rear bed with lying surface over the entire width, for M-layouts, overhead lockers like in L-version	1.990,00 €
042850 / 0	Supplement for version TREND (furniture corpus in Palisander)	2.500,00 €	

Prices in Euro (incl. 20 % VAT)

1) Weight in kg 2) only combined with Electrical Package

SPECIAL EQUIPMENT MORELO PALACE ALKOVEN

BATHROOM . MULTIMEDIA . ELECTRONICS

	Item / Weight ¹⁾		all models
BATHROOM	036060 / 0	Ceramic toilet bowl for cassette toilet, including SOG toilet ventilation (instead of standard fixed-tank toilet)	free of charge
	035990 / 05	Greywater pump for transfer of wastewater into the toilet tank	890,00 €
	036035 / 20	Luxury bathroom with separate toilet area and mini heki	1.990,00 €
	036068 / 0	Towel radiator in chrome finish instead of white	790,00 €
	036033 / 03	Oriental shower for Premium bathroom	300,00 €
MULTIMEDIA	037328 / 05	Radio/CD in the living area with 2 loudspeakers in the alcove	850,00 €
	037090 / 04	Twin reversing camera with shutter and 7" flat screen	1.290,00 €
	037246 / 52	Satellite TV system, with 24" flat screen underneath cabinet in entrance area (left-hand side), 85 cm dish, fully automatic orientation, multi-user facility via TWIN-LNB and 24" flat screen TV in bedroom (total vehicle height + 130 mm)	5.490,00 €
	037423 / 56	Satellite TV system with 32" flat screen in wall-mounted glass cabinet (passenger's side), with assorted glassware, electrically lowerable, 85 cm dish, fully automatic orientation, multi-user facility via TWIN-LNB and 24" flat screen TV in bedroom (total vehicle height + 130 mm)	6.290,00 €
ELECTRONICS	031051 / 02	Alarm system	1.290,00 €
	025043 / 30	Roof air conditioning, for living area with infrared remote control (total vehicle height + 130 mm)	2.890,00 €
	025044 / 30	Roof air conditioning, for bedroom with infrared remote control (not in combination with panoramic roof window - total vehicle height + 130 mm)	2.890,00 €
	037196 / 15	Solar panel, with 120 W maximum power	1.490,00 €
	037197 / 30	Solar panels, with 2 x 120 W maximum power	2.190,00 €
	037199 / 60	Solar panels, with 4 x 120 W maximum power, with heavy duty charger (if enough space on the roof)	3.990,00 €
	031345 / 110	Electrical Package „Energy 420 Premium“ (instead of serial standard) Gel batteries 2 x 210AH, 80A charger, sine wave inverter up to 1.800 W, fully automatic top class battery protection, Premium control panel, 230 V socket in rear garage	4.190,00 €
	031346 / 110	Electrical Package „Masterpower Premium“ (instead of serial standard) Gel batteries 2 x 210 AH, combined charger/inverter 100 A/2.200 W, with power sharing, fully automatic top class battery protection, Premium control panel, 230 V socket in rear garage	6.290,00 €
	031347 / 35	Electrical Package „Masterpower Lithium Premium“ (instead of serial standard) Lithium battery 1 x 360 AH, combined Mastervolt charger/inverter 150 A/ 3.000 W, with power sharing, fully automatic top class battery protection, Premium control panel, 230 V socket in rear garage	11.990,00 €
	031 447-1 / 58	Additional Lithium battery 360 Ah (technical examination reserved)	5.900,00 €
031450 / 05	Sine wave inverter 300W (with separate socket and on/off switch for continuous use of small appliances, f.e. a respirator)	450,00 €	



Prices in Euro (incl. 20 % VAT)

¹⁾ Weight in kg

SPECIAL EQUIPMENT MORELO PALACE ALKOVEN

GAS + HEATING + WATER . UPHOLSTERY + DECORATION

Item / Weight ¹		all models	
GAS + HEATING + WATER	034202 / 03	External shower on the driver's side in the rear	300,00 €
	033020 / 02	Gas alarm, to monitor living area	420,00 €
	018600 / 15	Diesel auxiliary heating, with convenient continuous heating via heat exchanger (5.200 W), including timer	2.950,00 €
	033026 / 03	Outside gas point, on side wall at passenger's side	290,00 €
	033005 / 88	120 litres gas tank, with remote filling in the side wall and level indicator in control panel display	2.590,00 €
	033006 / 146	195 litres gas tank, with remote filling in the side wall and level indicator in control panel display (if enough space underneath chassis)	2.950,00 €
	023110 / 40	2.600 W gas generator, fixed installation (only in combination with gas tank)	5.290,00 €
UPHOLSTERY + DECORATION	050100 / 0	Microfibre upholstery, in variety of patterns	■
	050505 / 0	BiColour microfibre upholstery, in variety of patterns	300,00 €
	050524 / 20	Fabric-Leather "TRENDLINE" upholstery combination, in variety of patterns	2.990,00 €
	050500 / 27	Leather upholstery, in variety of patterns	3.590,00 €
	050506 / 27	BiColor leather upholstery, in variety of patterns	3.890,00 €
	051312 / 15	Living area carpet, in the colours Coco 830 beige, 865 grey-brown and schoko	990,00 €
	051311 / 0	Living area carpet in special colour	1.140,00 €
	051276 / 05	Decoration package "Trendline", consisting of 8 cushions and Trendline decorative curtains instead of the serial standard ones, in variety of patterns	650,00 €
	051271 / 0	Venetian blinds in the living room, pleated blinds in the bedroom	590,00 €
	051272 / 0	Venetian blinds in the living room and in the bedroom	1.090,00 €
	090000 / 0	Vehicle delivery at the factory, with extensive briefing in German language, handover inspection, diesel tank filling and factory tour	1.590,00 €

EXPERT ADVICE	<p>THE VB FULLAIR 4C</p> <hr/> <p>For more comfort, improved roadholding and improved stability.</p> <p>Functions Did you know that the VB FullAir 4C systems also provide the following functions?</p>	 <p>Auto level function (optional) Off-road function (up to 25 km/h) Process water discharge function Rear garage entry function Ferry boarding function Manual raising Manual lowering</p> <p>www.vbairsuspension.co.uk</p>		ALKOVEN

Prices in Euro (incl. 20 % VAT)

¹⁾ Weight in kg ■ Standard equipment

LIVING ROOM

The standard lounge is equipped with ergonomic seat cushions, a pull-out table and a glass case with LED lighting. Numerous other layouts offer a wide array of customisation options.

We are certain that you will find the MORELO layout that is perfect for you.



"Lounge" living room

The seating quality is right on par with the showcase quality for these comfortable, ergonomically shaped cushions. The enormous windows allow plenty of light into the living room.



"Bar" living room (optional)

The "Bar" living room variant offers space for friends and family and increases the number of seats with safety belts from four to five.



"Novel" living room (optional)

The extra large lounge seating group has been opened towards the room with the kitchen connected to it directly. This creates an elegant line throughout the entire vehicle.



"Slide Out" living room (optional)

Up to 50 cm more room width by extending the side wall out to any position. The heated slide out is fully sealed.

BATHROOMS FOR PALACE

Different customer requests require different bathroom variants.

This is why MORELO offers various bathrooms depending on the vehicle, from compact to spacious and even with the option of a separate toilet room.



Premium bathroom

The premium bathroom offers plenty of room to move and numerous stowage options. The two-piece sliding door to the bedroom is mirrored.



Luxury bathroom (optional)

The separate toilet room offers a plus for privacy and enables flexible use of the bathroom by several people.



BEDROOMS FOR PALACE

Four bed variants are available for the bedroom equipment.

Cold foam mattresses with spot-elastic sprung base offer optimal head support and provide an optimal sleeping environment thanks to the integrated air channels.



Queen bed (M)

The queen bed is accessible from both sides and provides enough room for two additional wardrobes.

Convenient size: **163 x 200 cm**



Front-to-back bed (L)

The front-to-back bed maximises your available space and is available as a double bed or two separate beds.

Premium size: **Two times 106 x 200 cm**



French bed (F)

Ideal for everyone who wants to be close to their partner at night and delights in having an additional wardrobe.

French-style bed dimension **158 x 191 cm**



Rear transverse bed (H)

The rear transverse bed uses the entire width of the vehicle, meaning the bedroom takes up less length.

Efficient size: **150 x 214 cm**

KITCHEN COUNTERTOPS

The Morelosan kitchen countertop with seamlessly integrated sink and drying basin is functional and very easy to clean thanks to the smooth form free of joints or edges. High-quality solid surface countertops are available as special equipment.



Solid surface Salt



Solid surface Pepper



Solid surface Nutmeg



Morelosan Salt



Morelosan Pepper

INTERIOR SURFACES

You have the choice between two furniture fronts made of fine wood: Macadamia or our entirely new option, Rosewood. This includes the "Classic" furniture doors for the Macadamia version and "Style" furniture doors for Macadamia and Rosewood.



Furniture wood colour Macadamia



Furniture wood colour Rosewood



Furniture finish Classic



Furniture finish Style



Furniture finish Trend



Wall lining Synthetic leather



Wall covering Standard

VELOURS OR SISAL LIVING ROOM FLOORS AND FLOOR COVERINGS

The surface of the optional floor coverings are easy to clean while remaining exceedingly durable and long-lasting. The variants in Sisal and Velours quality lend the living room a pleasant atmosphere.



Living room floor



Carpet Velours Beige



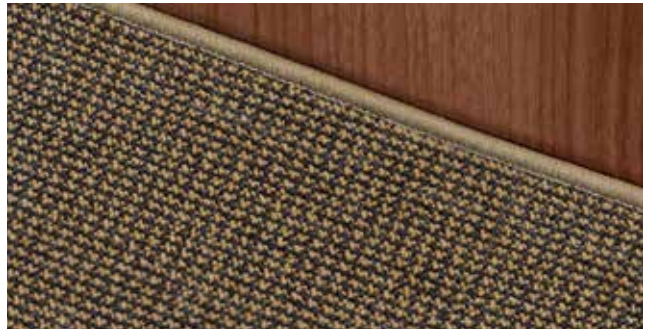
Carpet Velours Grey-brown



Carpet Velours Chocolate



Carpet Sisal Sierra



Carpet Sisal Amber

CUSHIONS: MICROFIBRE

Ergonomically shaped cushions with diol padding offer outstanding sitting comfort.

The Teflon-coated microfibre surface repels dirt and is extremely durable.

Zippers let you change the coverings for thorough cleaning.



Denver 101 Cream



Denver 105 Creme beige



Denver 169 Coffee



Denver 146 Caramel

CUSHIONS: LEATHER/FABRIC COMBINATION

Combining leather and fabric joins two contrasting types of materials to form one modern surface look.

The surfaces of the seat and backrest are covered in fabric with cushion skirts of leather. The effect can be emphasised by selecting corresponding colours.

CUSHION: LEATHER

For the optional leather equipment, MORELO uses soft yet strong cowhide with an elegant surface structure. The surface repels dirt and can be easily cleaned with a moist towel as needed.

**Malibu** 3819 Cream**Nairobi** 2262 Café**Delhi** 1434 Stone**Monaco** 3688 Savannah**Dallas** Creme beige 3753**BiColor Nairobi** 2262 Café/**Dallas** 3753 Creme beige

TABLE IN THE LIVING ROOM

The living room table is available in three different finishes. Lacquered real-wood frames and durable, scratch-resistant laminated surfaces offer maximum quality.



Tabletop Sand



Tabletop Slate



Tabletop Copper



Tabletop Marble, table edge colour Macadamia



Tabletop Marble, table edge colour Rosewood

SELECTED DRAPERY MATERIALS

Your MORELO is customised as you wish.

Of course, this also includes picking your favourites from among the material patterns.



Individuality is emphasised in a MORELO.



Pattern 200



Pattern 170



Pattern 190



Pattern 340



MORELO
FIRST CLASS REISEMOBILE

MORELO Reisemobile GmbH · Helmut-Reimann-Straße 2 · D-96132 Schlüsselfeld · Fon: +49 (0) 95 52 - 9296 00 · www.morelo-reisemobile.de

Subject to technical changes and errors. Please note that some of the illustrations in this catalogue show alternative designs or optional extra fittings, which would incur additional costs. Variations in colour may arise during printing. This document, including extracts thereof, may only be reproduced with the written permission of MORELO Reisemobile GmbH.

The prices listed for vehicles and extras apply to their purchase and licensing in Germany. They are given in Euro and include VAT at 20%. We reserve the right to adjust prices accordingly in the event of VAT increases during the delivery period. All prices represent nonbinding recommendations ex works. Price changes for basic vehicles will cause price adjustments based on the additional price for the basic vehicle. The prices for extras are only valid if they are fitted in the factory and scheduled in due time. Retrofitted extras will incur additional material and assembly costs.

Prices include ancillary costs for pre-shipment of the chassis and TÜV certification. Transport cost or cost for registration in foreign countries are not included.

We reserve the right to make technical modifications, providing overall product quality is maintained or improved and there is no restriction in terms of the designated use.

This price list applies to orders as from the 1st of August 2017. All previous price lists will cease to be valid. Errors and omissions excepted.

¹ The mass of the vehicle in running order includes: driver (75 kg), full fuel tank, 100 litres of fresh water, full gas bottles, tool kit and spare wheel. The fitting of extras and accessories may alter the weight and dimensions. All dimensions and weights are based on the knowledge available at the time of going to print. Deviations of +/- 5% are possible and deemed acceptable.